

UTOPIA in Nature

Final Submission : Work Instruction

Team : Con-Create

Gyubeom Kim

Department of Architecture, Pusan National University, Busan, Korea

Dongnyeong Heo

Department of Architecture, Pusan National University, Busan, Korea

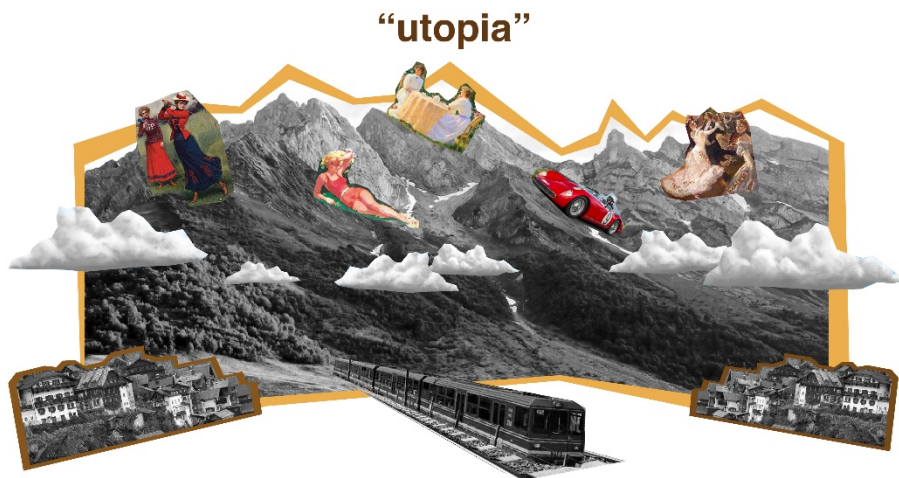
Uiin Jung

Department of Architecture, Pusan National University, Busan, Korea

Seunghun Lee

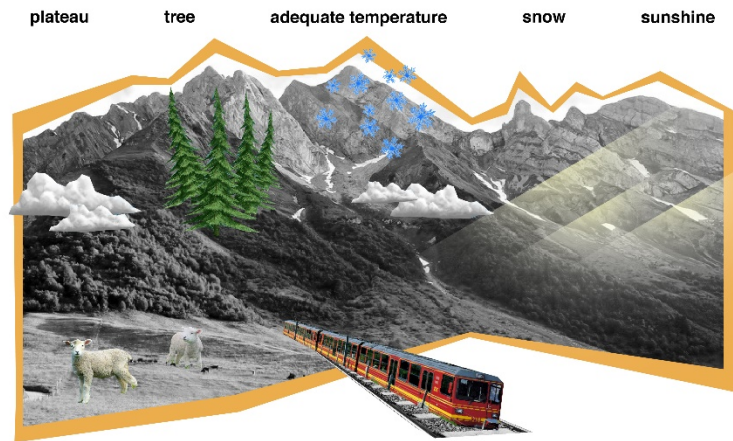
Department of Architecture, Pusan National University, Busan, Korea

Past Semmering



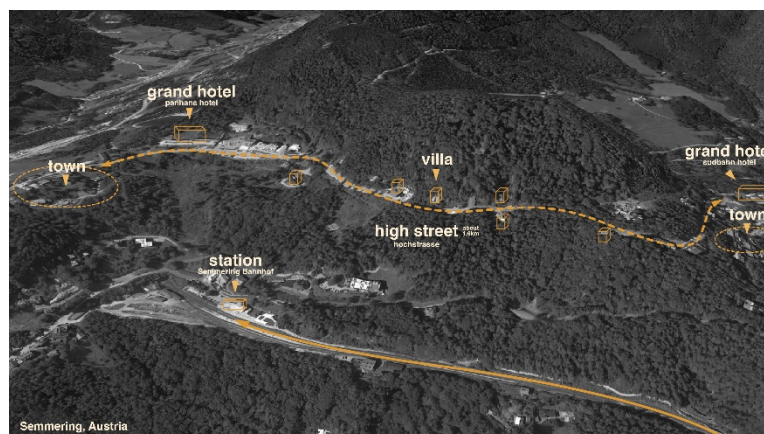
In the past, Semmering was used as a summer vacation spot for bourgeoisie, thanks to its cool temperature and unique natural scenery. There were various activities (car racing, golf, sunbath) and parties and relaxations. We thought this Semmering was a utopia. Unlike Semmering's glory in the past, however, tourism is retreating and the major transportation center is shifting, leaving the area underdeveloped.

Concept



There are many factors that could have made Semmering a utopia in the past, but the most important of them may be the nature of the Alps. We propose a visitor center with a utopian experience focusing on nature that could make Semmering a utopia. The building includes passes and galleries that partially show Semmering's iconic elements ; railways, villages, hotels, and alpine areas.

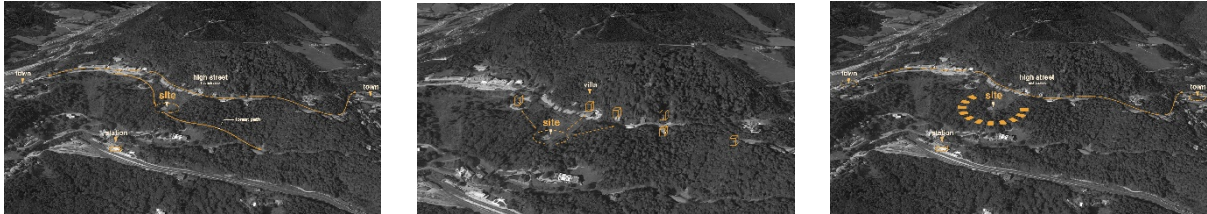
Site Analysis



To the south, there is a train station connected to the village. There is a hotel at both ends of Hochstrasse, which is the Panhans and Sudbahn. Hochstrasse is a quiet, forested road with bourgeois villas located in places based on this characteristic. The

trail connects Hochstrasse, buildings located halfway up the mountain, and train stations.

Site Selection



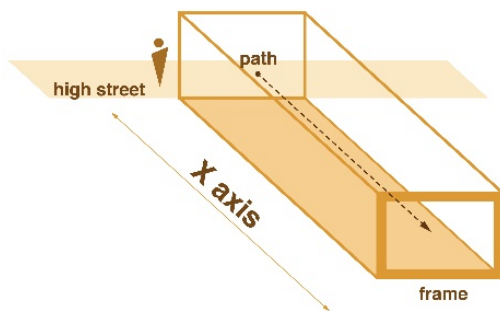
The land was selected between forest trail and Hochstrasse, and it is located on a flat land with excellent accessibility. The land also has a view of all the symbolic elements of semmering (railways, villages, mountain ranges, forests, etc.). The land itself is already flat, so it can be used with the utmost respect for nature. In the case of entrances, it is located far from the villa of Hochstrasse, which does not violate the private area of the villas.

Visitor Center

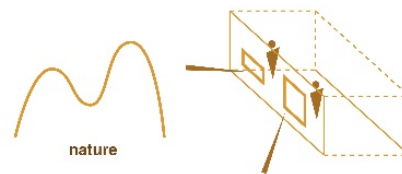


X axis

1. A large frame was placed at the end to reinforce the purpose

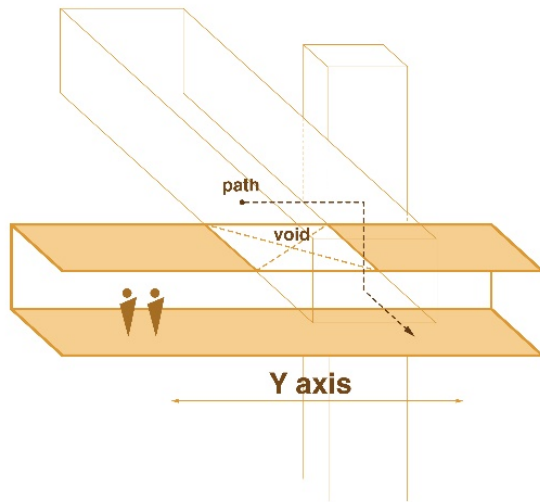


2. Framing the parts we want to show and displaying them in the exhibition space.

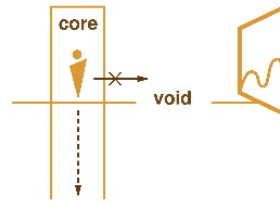


The gallery aisle on the X-axis entering Hochstrasse is used as an exhibition hall to appreciate Semmering. The frames open on each side of the aisle act as frames that hold the symbolic elements of Semmering. In other words, the symbolic elements of Semmering in the frame become a piece of work. The end of the passage is also perforated, which serves as a frame for the opposite landscape. This frame is a metaphor for the panorama of Y axis.

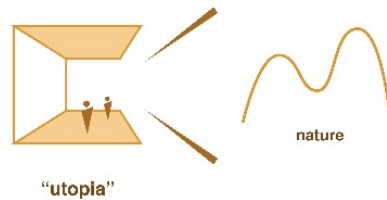
Y axis



3. Through the void space, direct path to the lower through the core

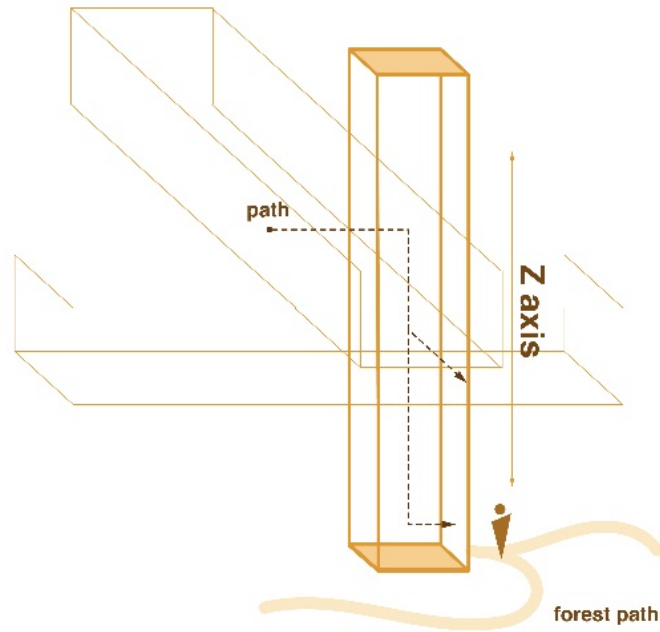


4. Through this space, utopia is realized by appreciating nature.



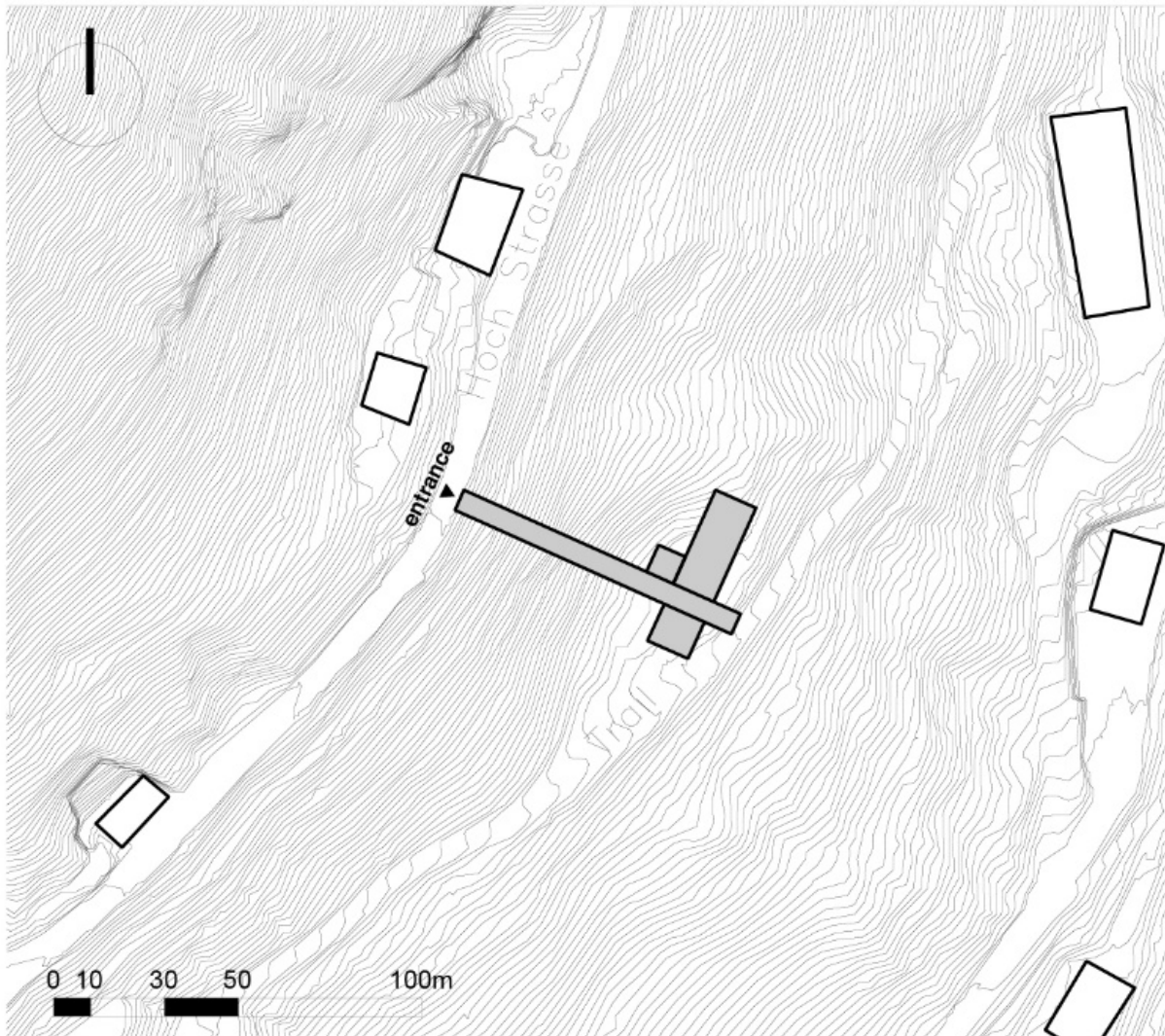
The Y-axis is an utopian space open to nature. It can enter the X- and Z-axes, and you can enjoy the elements of Semmering, which are seen as fragments, in an integrated panoramic view. To appreciate these panoramic views and enable utopian experiences, the inside of the Y-axis includes programs such as cafes where people can stay.

Z axis



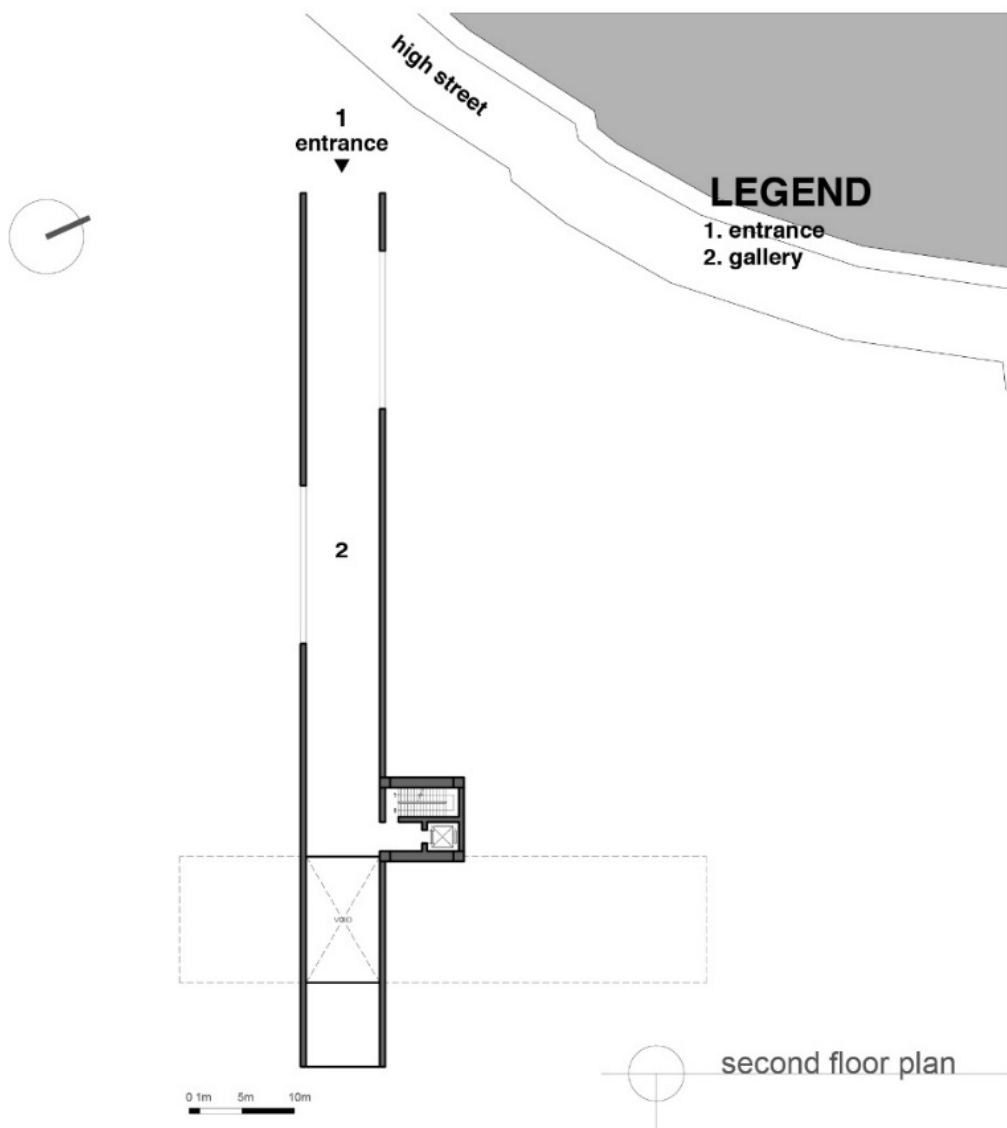
The Z axis is a vertical line from the path and the X axis to the visitor center and the visitor center. This vertical copper wire serves as a transition space for the Y-axis to the utopia, creating a new connection between Hochstrasse and the path.

Site Plan



The Visitor Center connects the high street and the path divided by the terrain.

Floor Plan

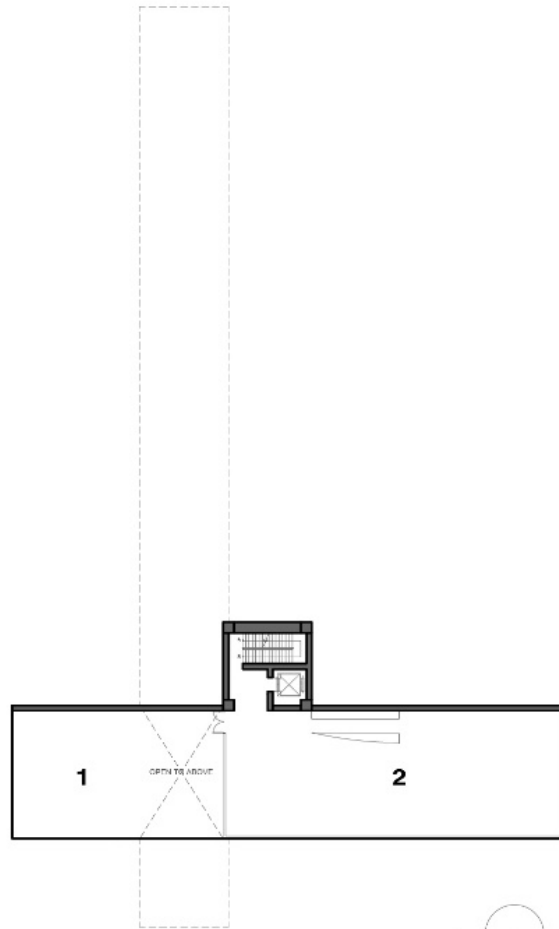


Slits on the x-axis of 60 meters become frames of Semmering's iconic elements, and repeated slits make people feel mysterious. This is the gateway to Utopia.



LEGEND

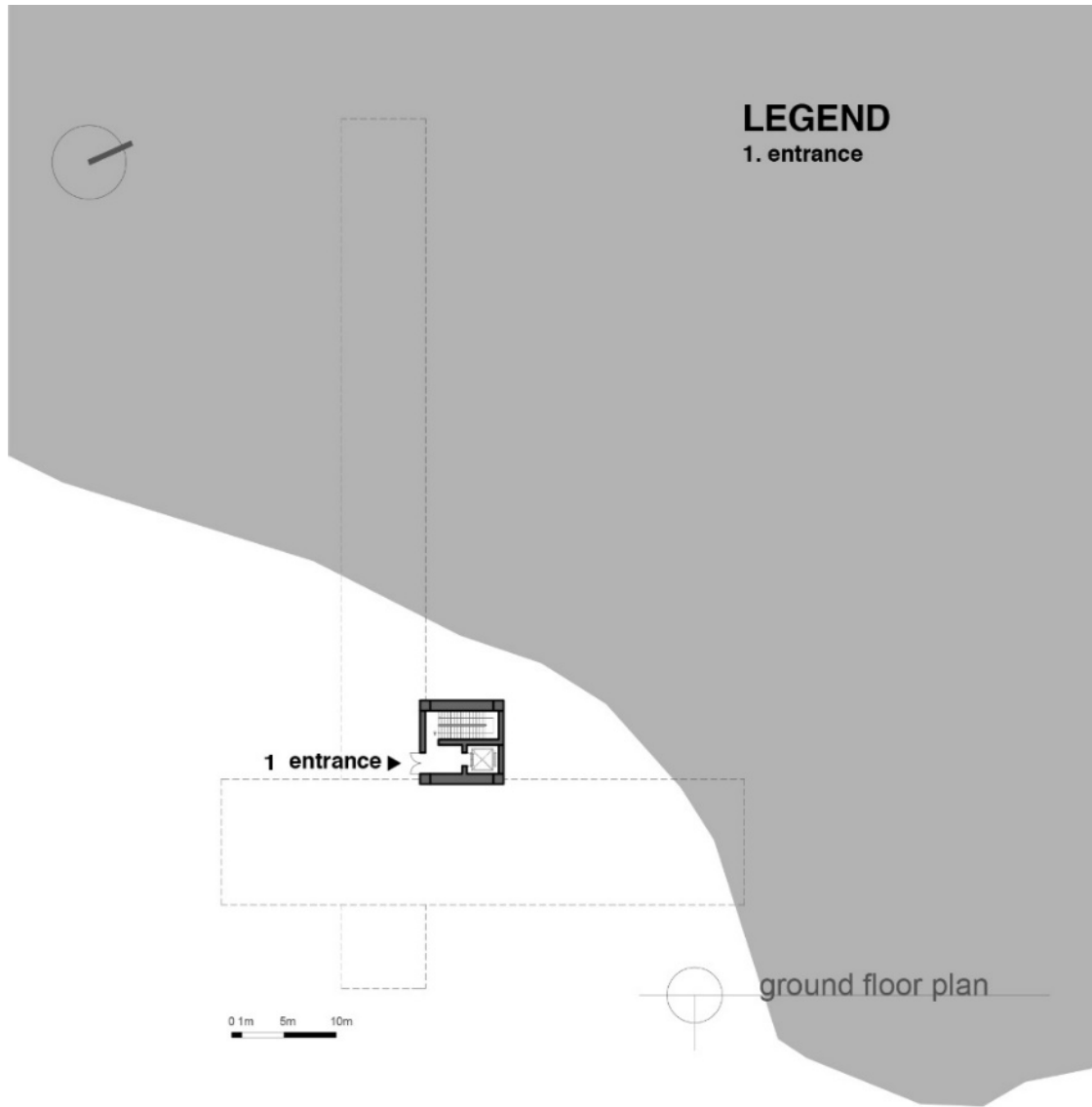
- 1. terrace
- 2. cafe



0 1m 5m 10m

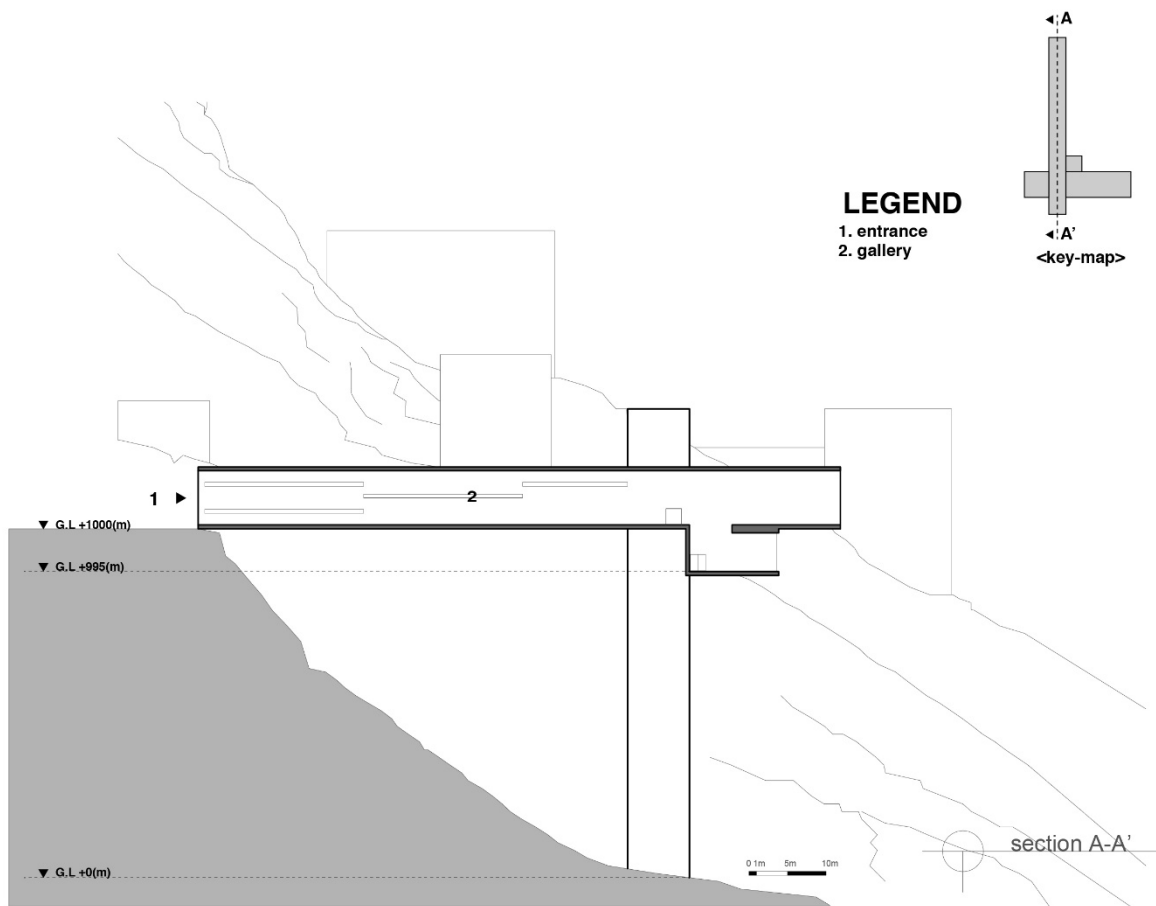
 first floor plan

A large frame, consisting only of a roof and floor slab, allows you to feel the Nature, Utopia.



A small entrance on the Z-axis can be found along a narrow path. With the Y-axis, the guardhouse adds dramatic effects to the spectacular view that will be held on top.

Section Plan



The horizontal transition space ; the X-axis, the vertical transition space ; Z-axis.... and the Y-axis above the sky, where these X and Z axes meet, is the utopia of the visitor center.