

TIME TO TRAVEL

A space-time spacecraft lands in Semmering, the "magic mountain", the destination of the sommerfrische of artists and intellectuals of the 900.

The spaceship is the home of a painter who, nostalgic for the past, returns to Semmering to find inspiration for his works in the surrounding nature.

He paints the landscape around, which becomes the ideal giant masterpiece he created.

The spacecraft becomes a "house of art" for all travellers, where forms are a painting metaphor; whether it is an easel of a painter or a limb of an animal, the traveller plants his home in the unspoiled nature.

The spacecraft takes root on the ground but overlooks the view like a bird in flight that could hover at any moment.

The spacecraft is not only made to be looked at but also to look out: flooded by light, it relates directly to the blue sky that frames it.

The painter finds in the mountain everything that modern society has denied him, regains inner balance and mind serenity. His mission is to revive these same sensations to all time travellers.



Heukuppe



Gloggnitz



Stuhleck Gipfel



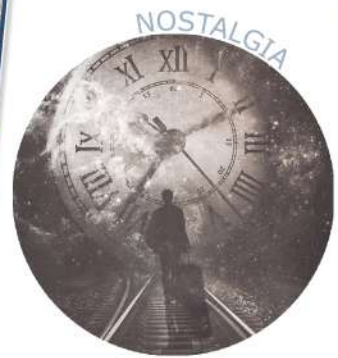
Großer Otter



Zauberberg



Jakobskogel



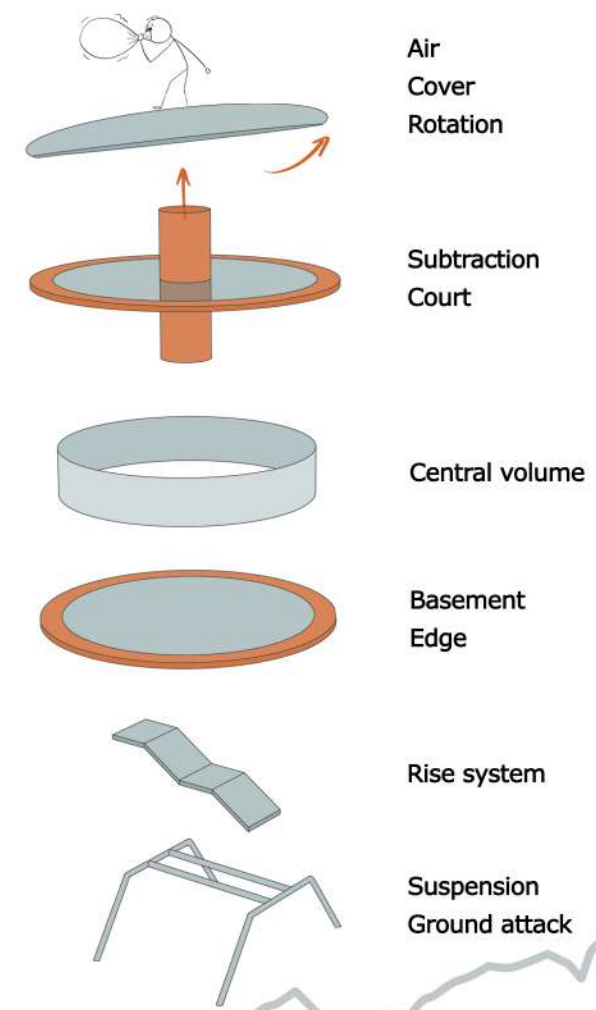
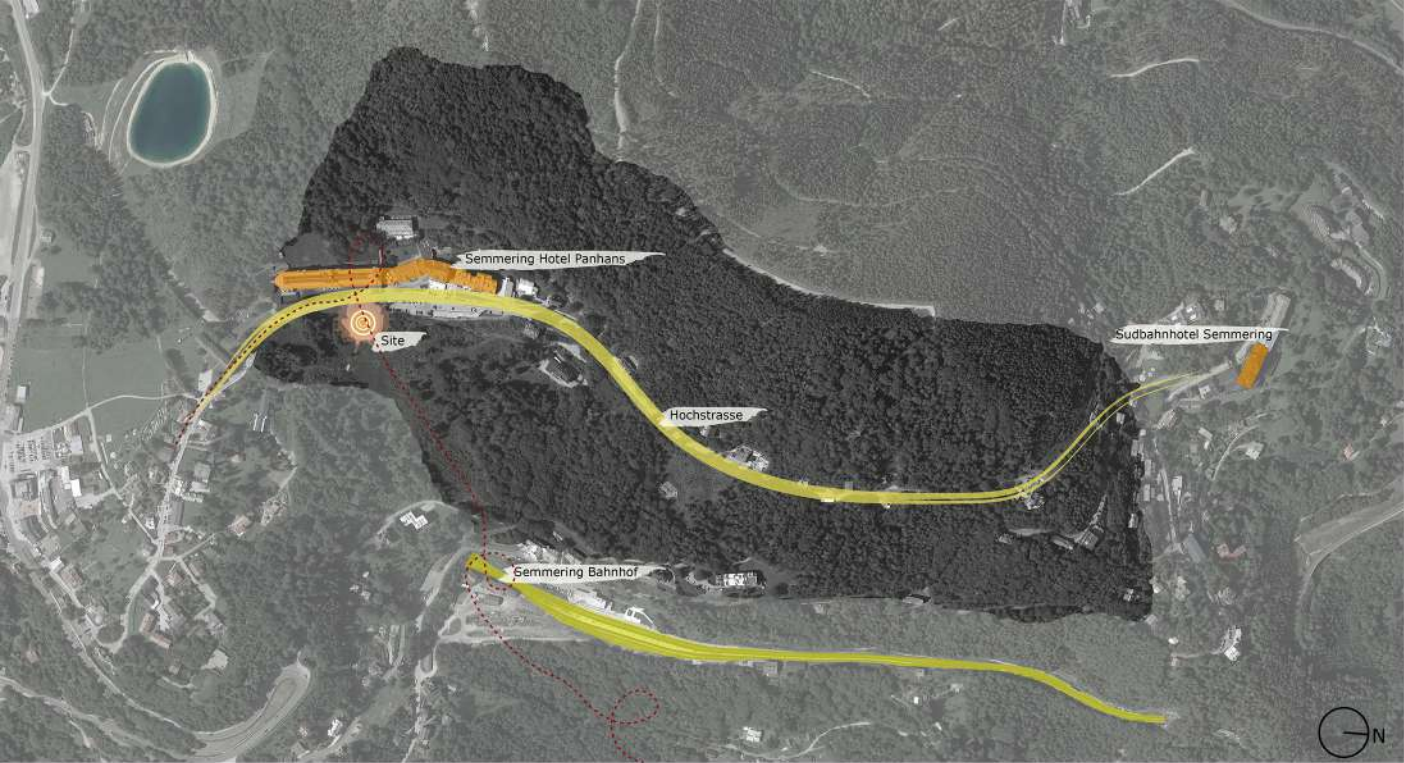
Sonnwendstein



Mürzzuschlag

PAST





Air
Cover
Rotation

Subtraction
Court

Central volume

Basement
Edge

Rise system

Suspension
Ground attack

«Genius loci is "the spirit of the place". The architect's task is to create meaningful places to help man to live.»
(Christian Norberg-Schulz, *Genius loci. Landscape, Environment, Architecture*, 1979)

