



# GROW

BY: WZ<sup>2</sup> FROM TJU



integrate different levels as a whole  
layered by function vertically  
**Mixed City**



### Higer City

set a platfrom based on the exsiting roofs  
then develop a new city from it

### Free City

highly developed and totally opened  
a unified production and life style

# HISTORY & NOWADAYS

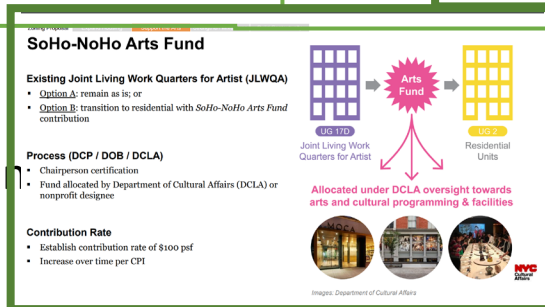
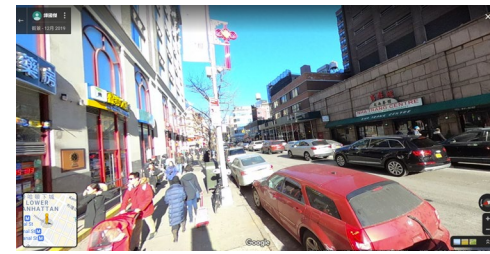


同濟大學  
TONGJI UNIVERSITY



# THE PROBLEMS

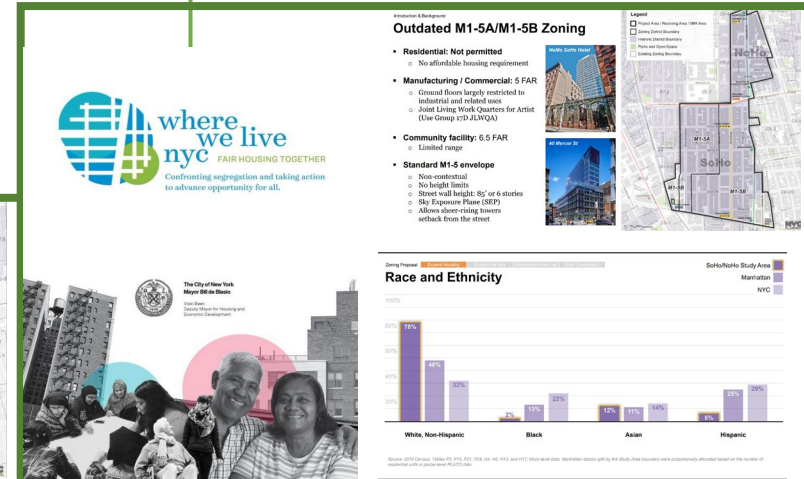
- Poor quality of life - land mess
- goods transportation
- Solid waste
- Open space is cramped
- Poor diversity of activities - backward function
- Housing shortage
- Lack of living space for artists and producers
- Lack of space for people with different identities
- Insufficient economic activity - lagging regulation
- Lack of production space
- Lack of regulatory system
- Other Important matters
- Landscape protection
- Pay attention to the partition



**Bulk | Density & Envelope Overview**

	M1-6 / R10 Opportunity Areas	M1-6 / R8X Historic Corridors	M1-6 / RTX Historic Cores
Residential FAR	12.0	9.7	6.0
Commercial / Mfg. FAR	7.0/8.0/10.0 (CPC req'd)	5.0 / 6.0	5.0
Community Facility FAR	6.5		
Base Height (ft)*	125 - 155	85 - 145	60 - 105
Max Height (ft)	275	205	145

\*Additional base height flexibility within historic districts to facilitate better cornice alignment



同濟大學  
TONGJI UNIVERSITY

# COUNTERMEASURES

- **Poor quality of life - land mess**

- goods transportation
- Solid waste
- Open space is cramped

The infrastructure will be transferred underground, and the problems of freight transportation and solid waste transportation will be solved at the same time. The above-ground space will create more open space and green landscape, increase activities and promote communication.

- **Poor diversity of activities - backward function**

- Housing shortage
- Lack of living space for artists and producers
- Lack of space for people with different identities

Ground space replanning thinking, the internal space of the building reintegrated layout, reorganization as needed.

- **Insufficient economic activity - lagging regulation**

- Lack of production space
- Lack of regulatory system

We will increase public cultural space, artists' creation space and housing space. To coordinate with public air traffic, add upper level spatial links.

- **Other Important matters**

- Landscape protection
- Pay attention to the partition

The original property rights are replaced in the air, and the lower floors are used as public and semi-public places to improve quality and protect interests

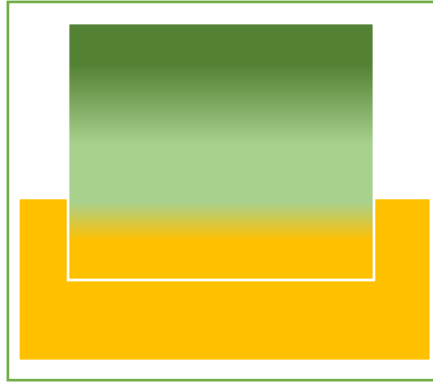




# THREE STAGES

The three stages of the city, from the addition of form and content, gradually transformed into a fusion of the old and the new, and by 2100 can be seen as **the flower pot of the future in the past.**

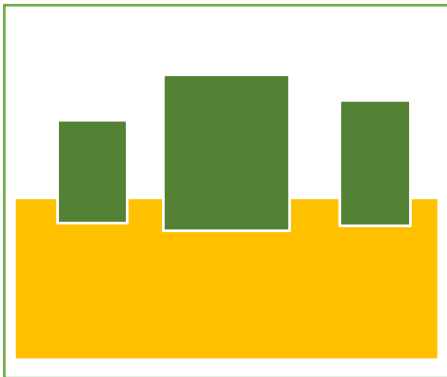
2030  
HIGHER CITY



2100 FREE CITY



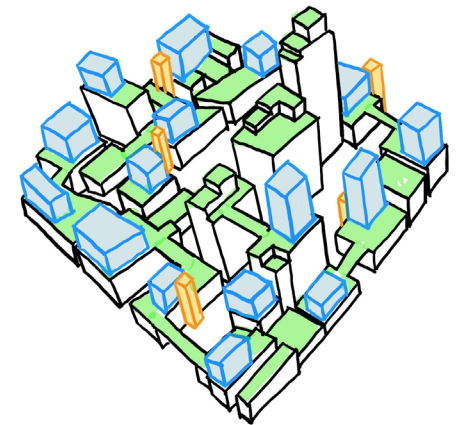
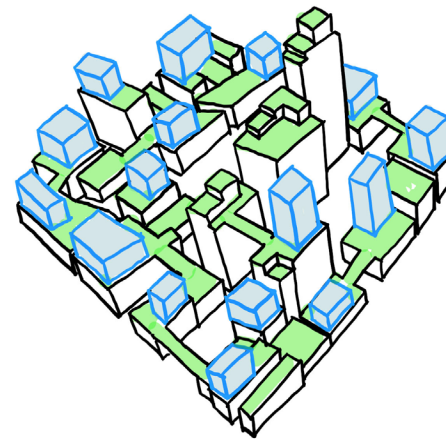
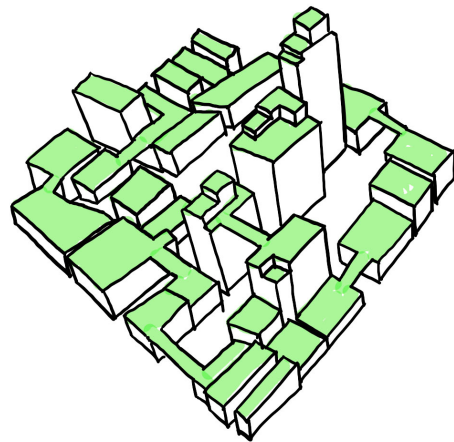
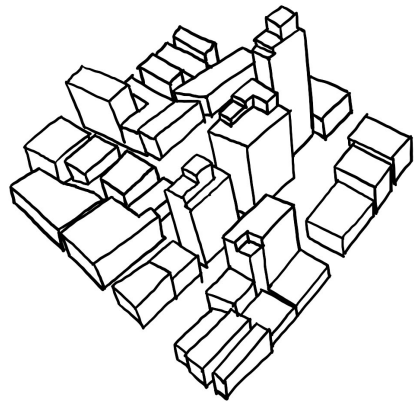
2050 MIXED CITY





# 2030 HIGHER CITY

The urban renewal strategy of 2030 is relatively modest, which we call “higher city”.





# 2100 FREE CITY

**From the pot of history grows a flower of the future.**



同濟大學  
TONGJI UNIVERSITY



# 2050 MIXED CITY

Between conservative and radical nodes?

To realize the imagination of humankind in the future with control



同濟大學  
TONGJI UNIVERSITY





同濟大學  
TONGJI UNIVERSITY

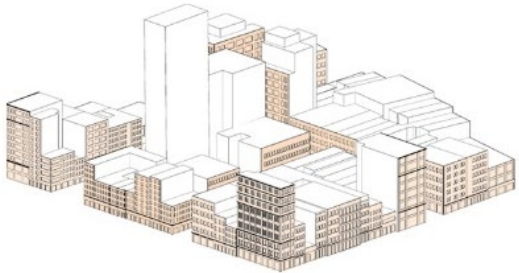




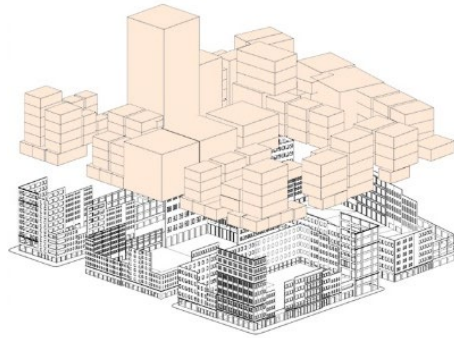
同濟大學  
TONGJI UNIVERSITY



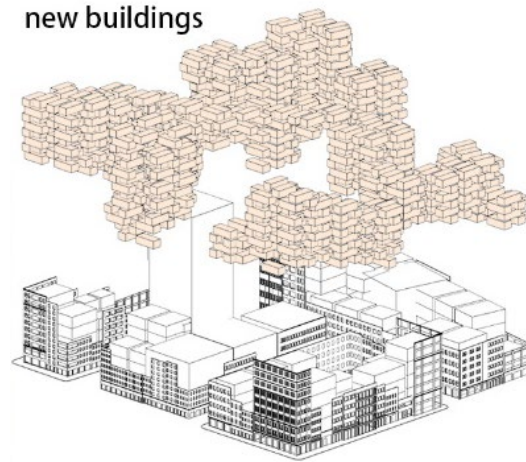
# GENERATION



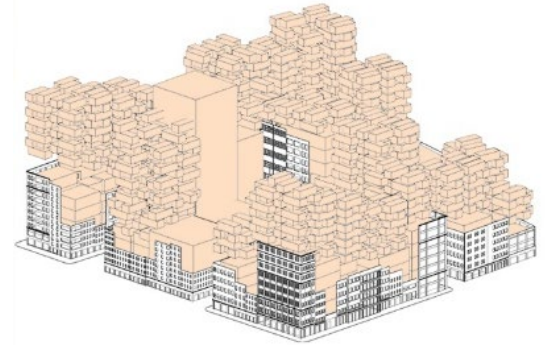
1. Preserved historic building facades and stripped of internal functions



2. New functions are implanted and the original property rights are replaced in the new buildings



3. Residential units shall be built above to meet the residential needs.



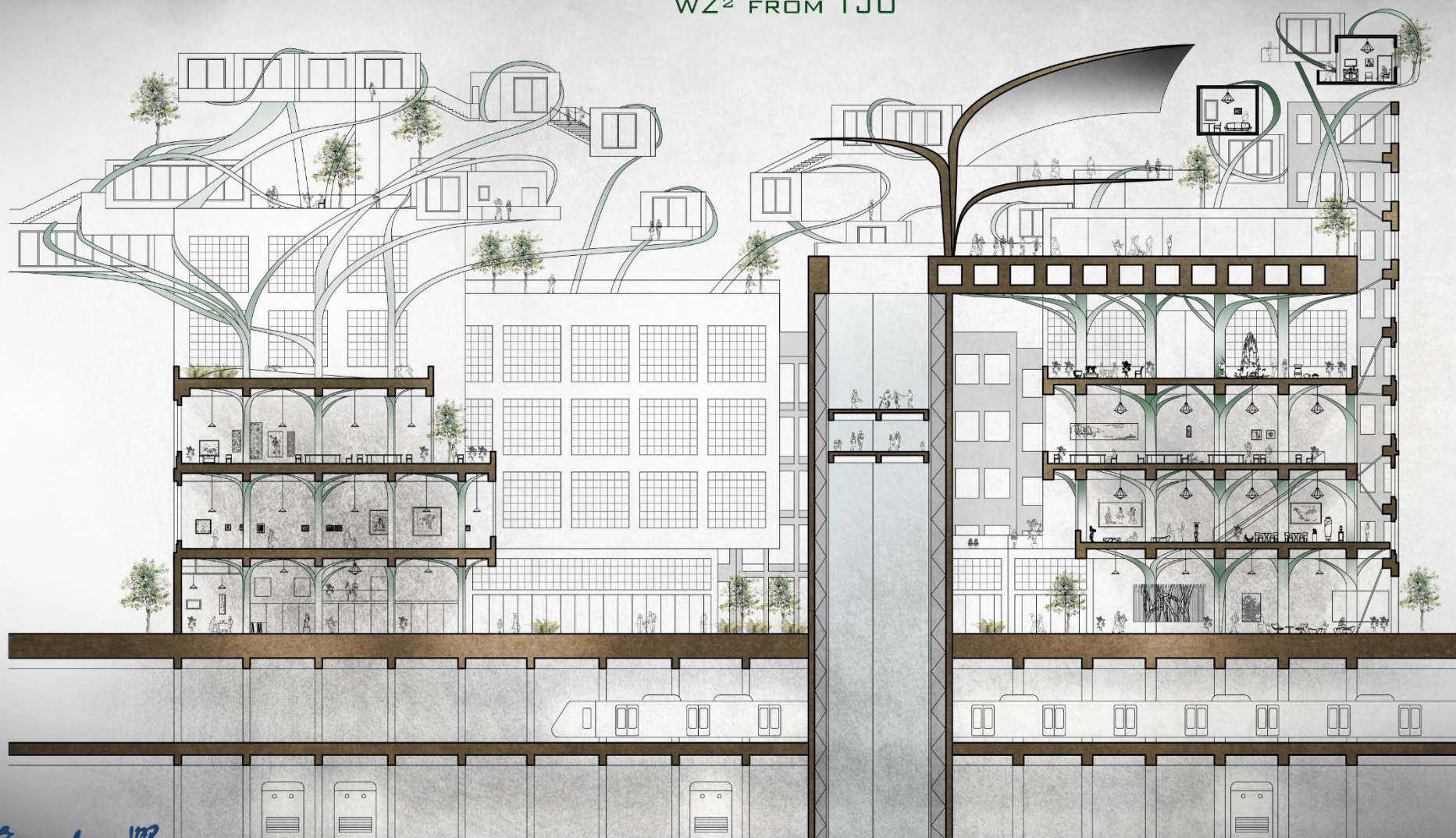
4. Air links between regions should be strengthened to meet the needs of public activities with air corridors and air platforms

- Vertically layered
- Above is the new city, below is the old
- Old buildings hollow out the contents and structures, leaving only the facade
- So far, there is no clear boundary between historical buildings and the new city, so it is called *Mixed City*



# GROW

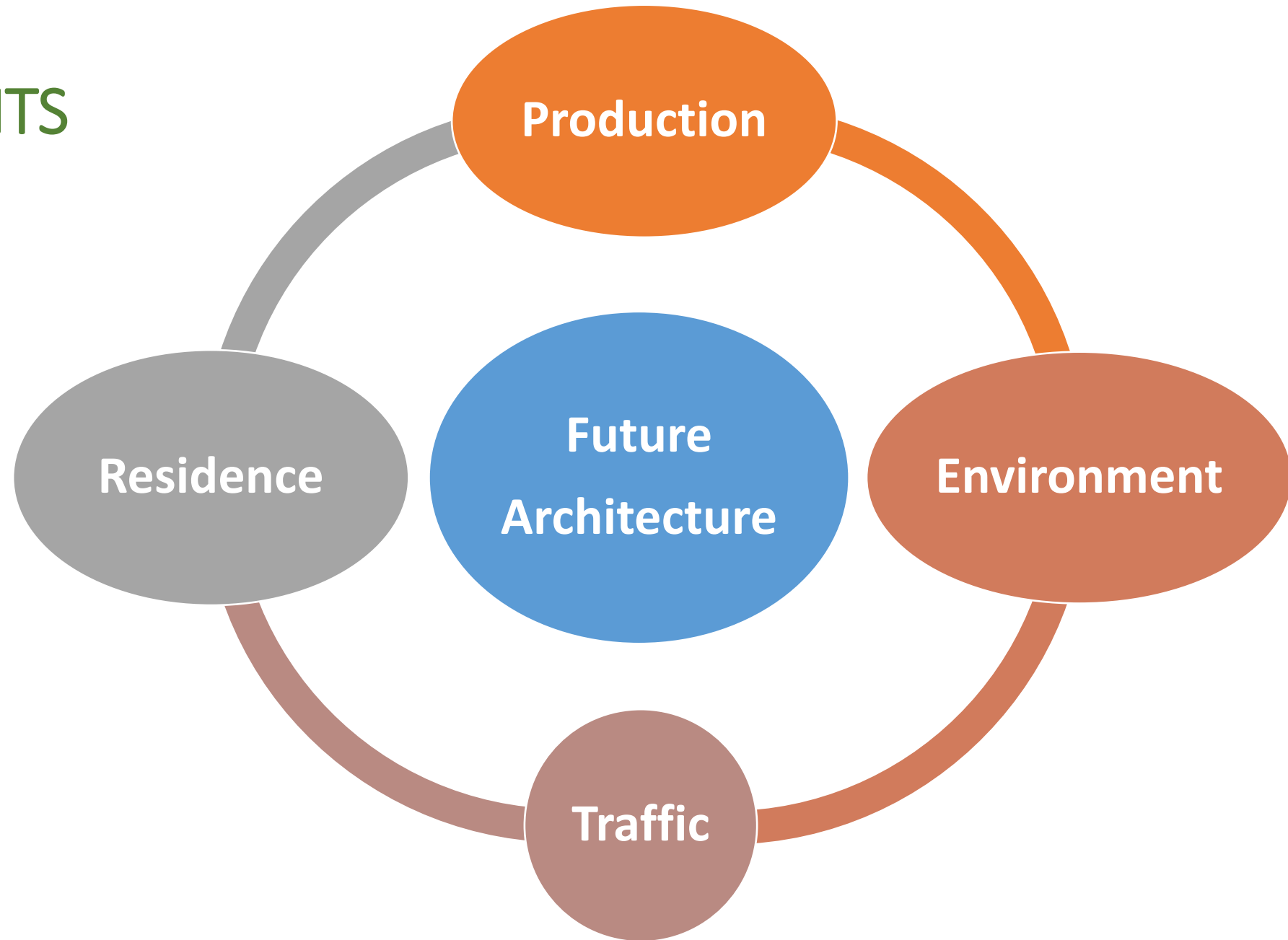
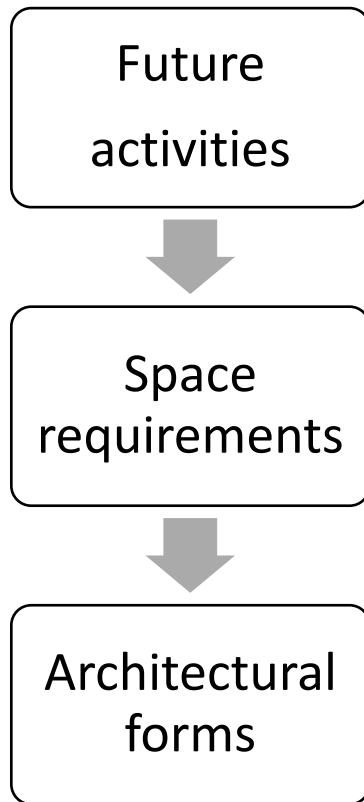
WZ<sup>2</sup> FROM TJU



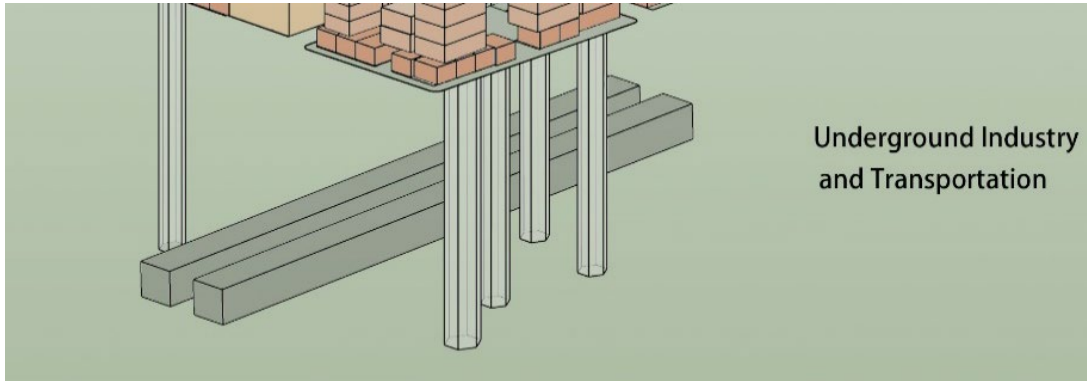
同濟大學  
TONGJI UNIVERSITY



## FOUR ELEMENTS

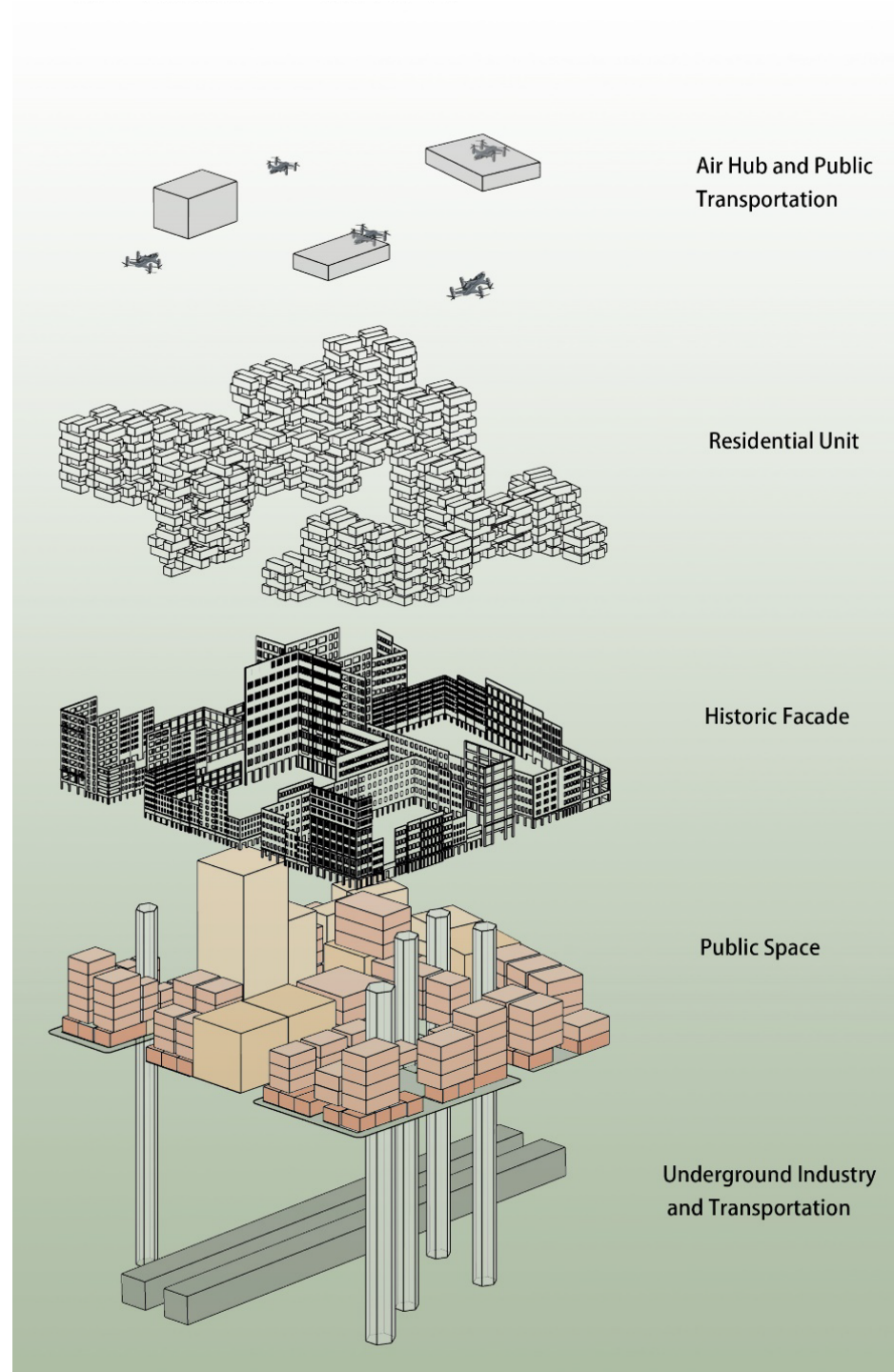


# FOUR ELEMENTS PRODUCTION



Underground Industry  
and Transportation

- Most industries are set underground



Air Hub and Public  
Transportation

Residential Unit

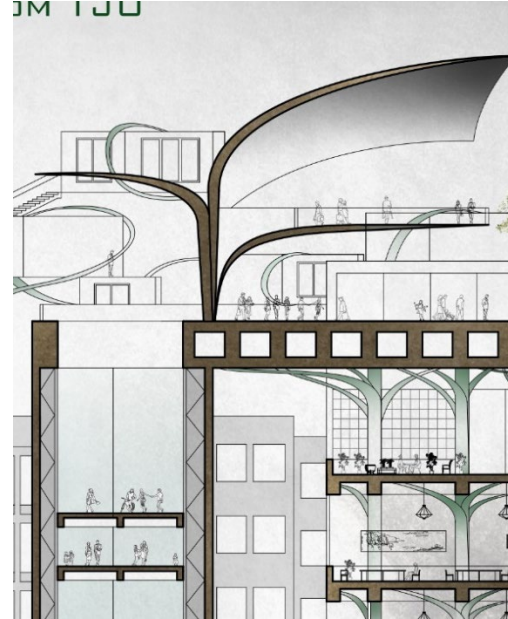
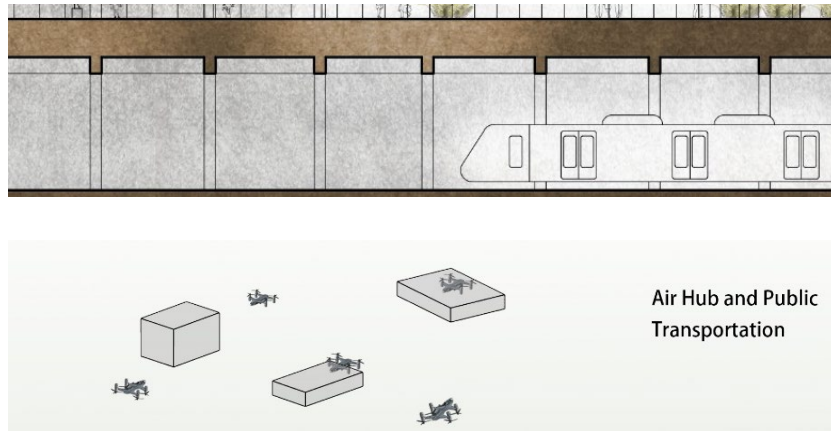
Historic Facade

Public Space

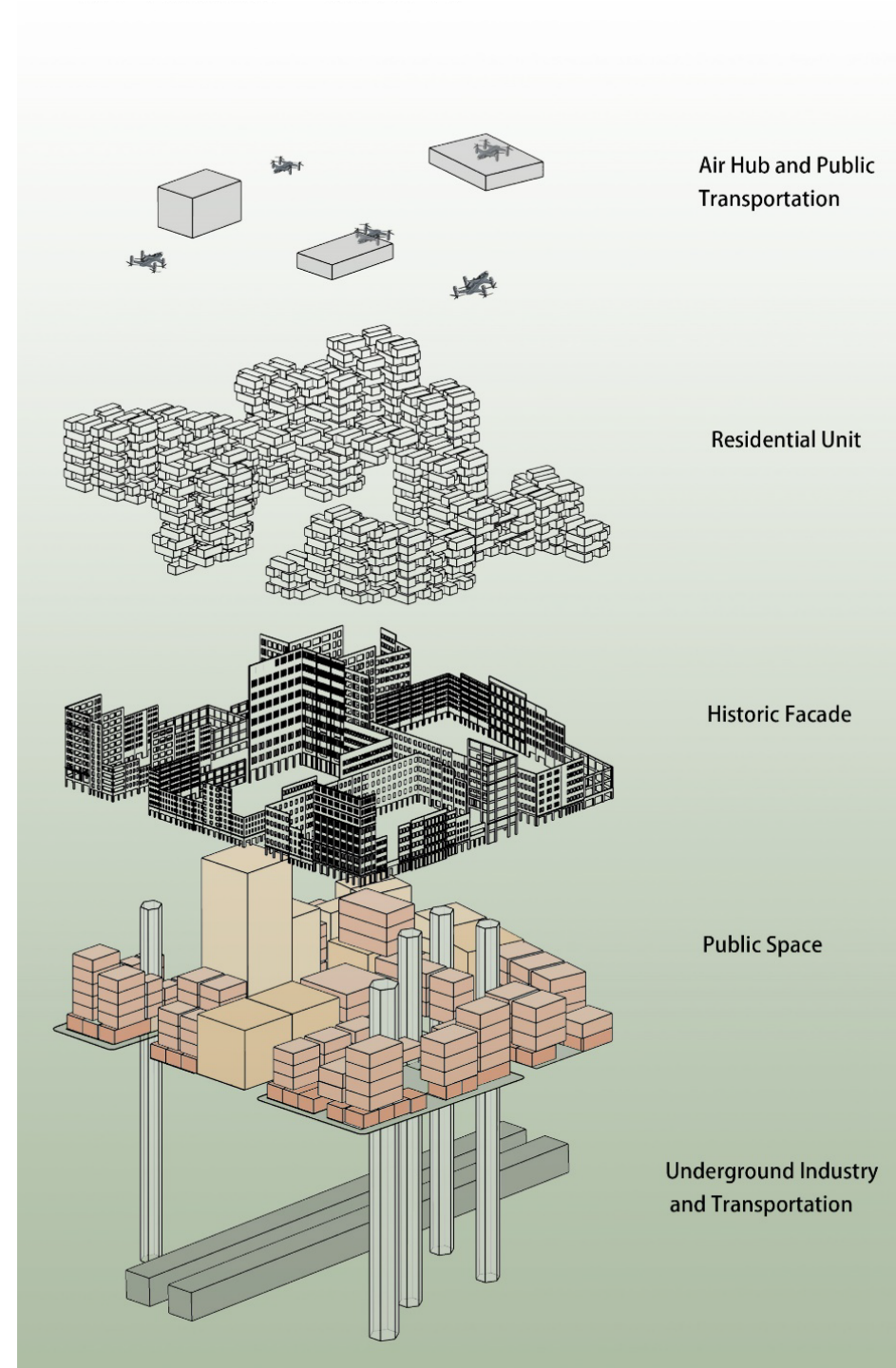
Underground Industry  
and Transportation



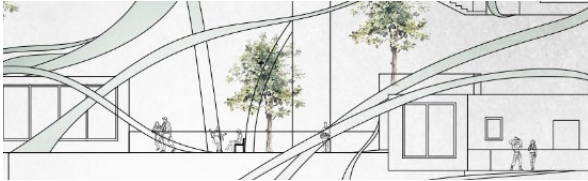
# FOUR ELEMENTS TRAFFIC



- Traffic above sky & traffic underground
- Air hub and platform + air track + aircraft
- Freight transportation & above-ground traffic



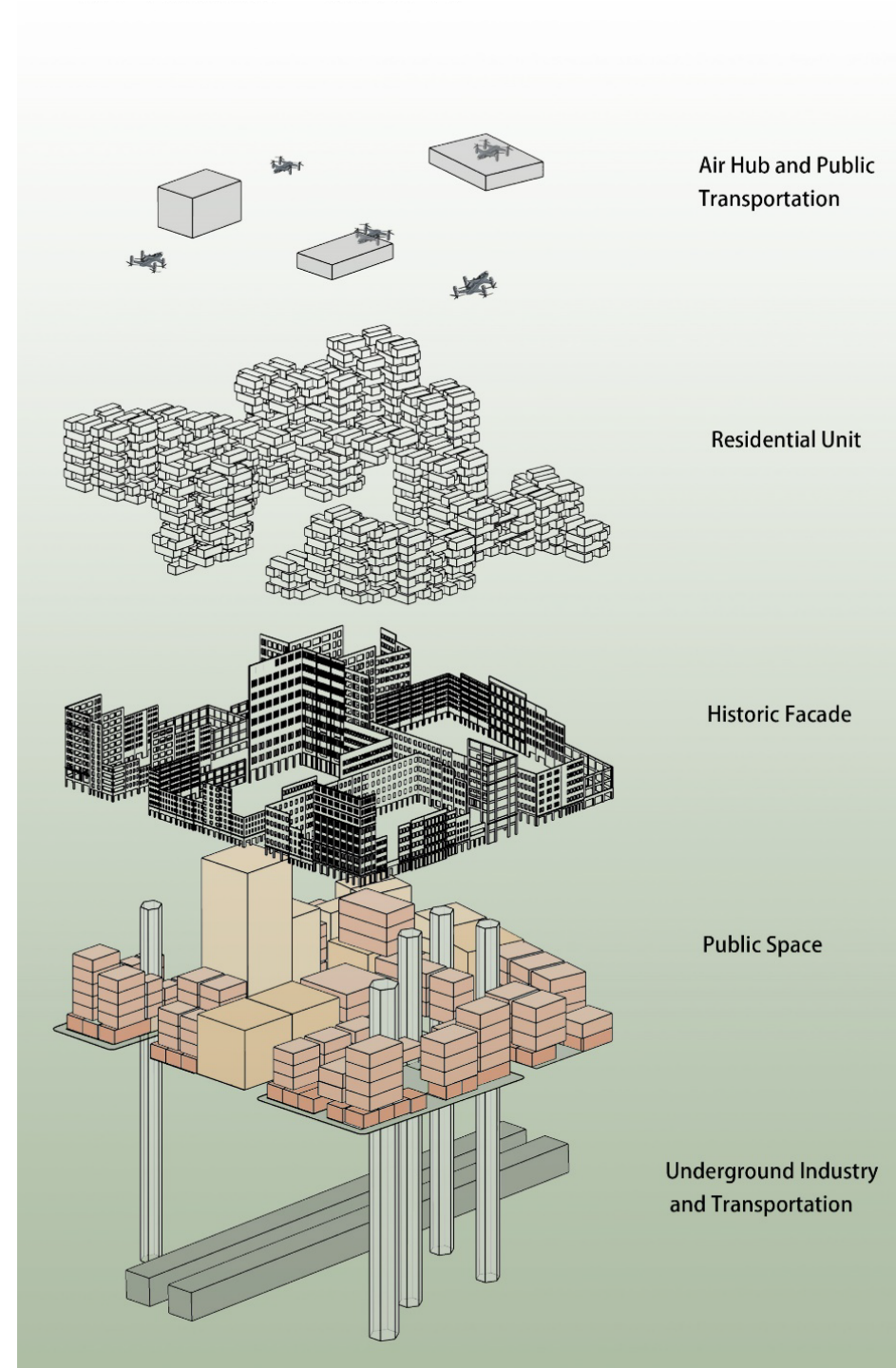
# FOUR ELEMENTS ENVIRONMENT



- A block scale green square above the ground
- Streets become promenades
- Hanging garden

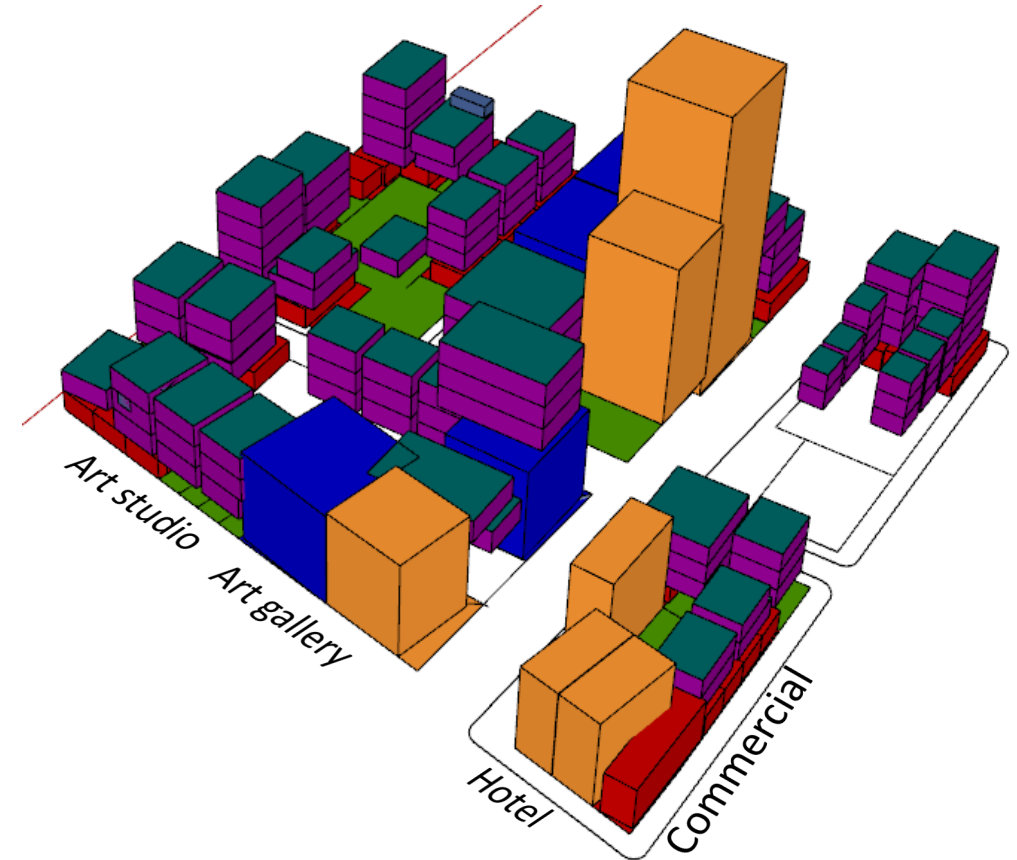
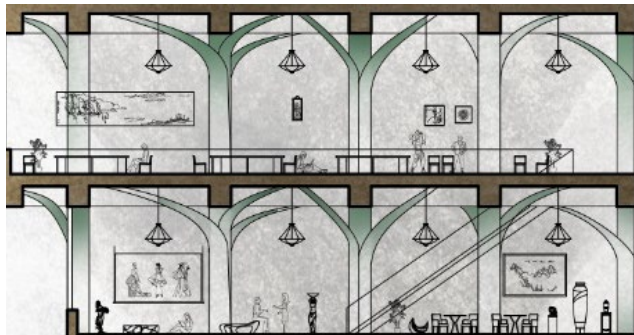


同濟大學  
TONGJI UNIVERSITY





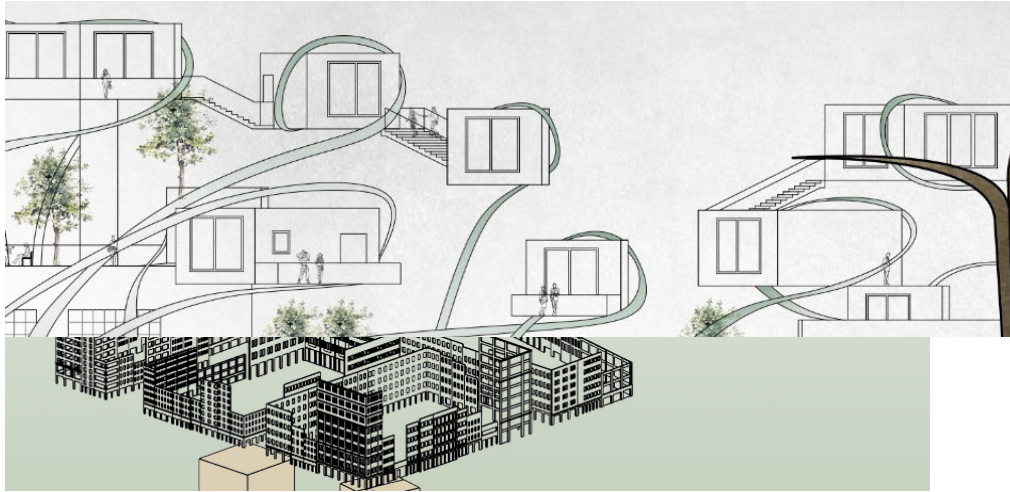
## FOUR ELEMENTS ENVIRONMENT



- Retain and reorganize the functions of the original historical buildings



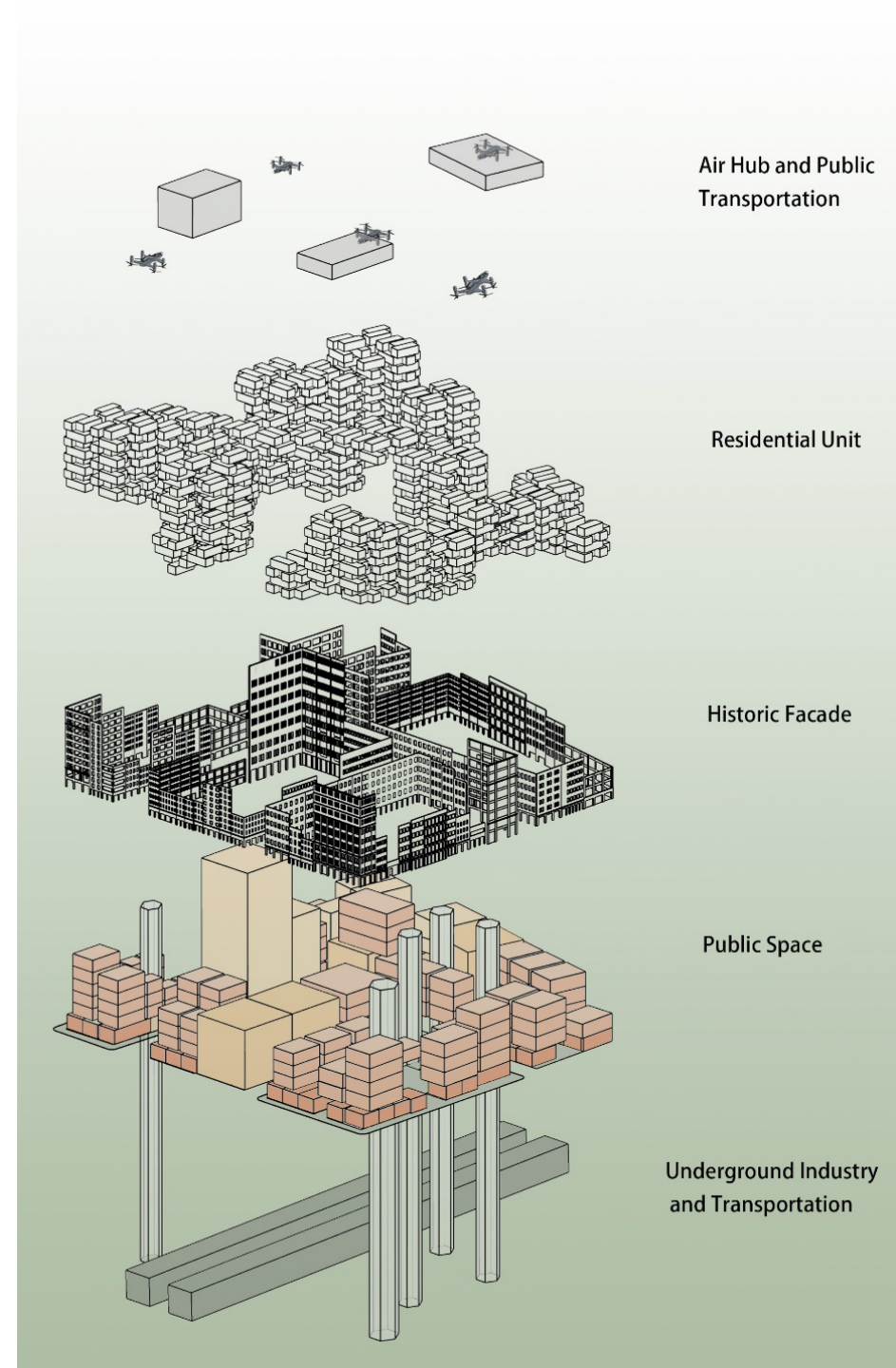
# FOUR ELEMENTS RESIDENCE



- A block scale green square above the ground
- Streets become promenades
- Hanging garden



同濟大學  
TONGJI UNIVERSITY



Air Hub and Public  
Transportation

Residential Unit

Historic Facade

Public Space

Underground Industry  
and Transportation



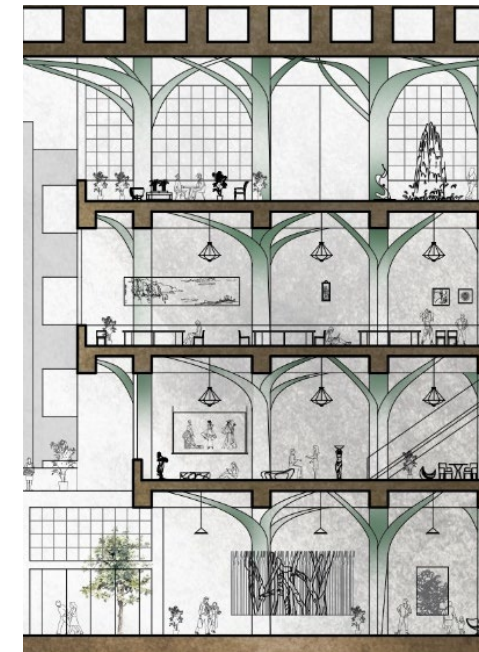
# TREE-LIKE STRUCTURES



- 3D printed biomaterials & mechanical arm
- Diverse, environmentally friendly and renewable
- Buildings grow like trees



同濟大學  
TONGJI UNIVERSITY







**PROBLEMS-STRATEGY**

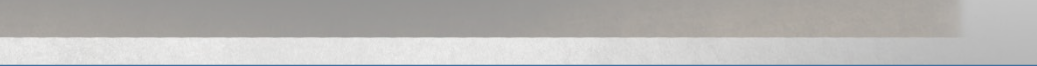
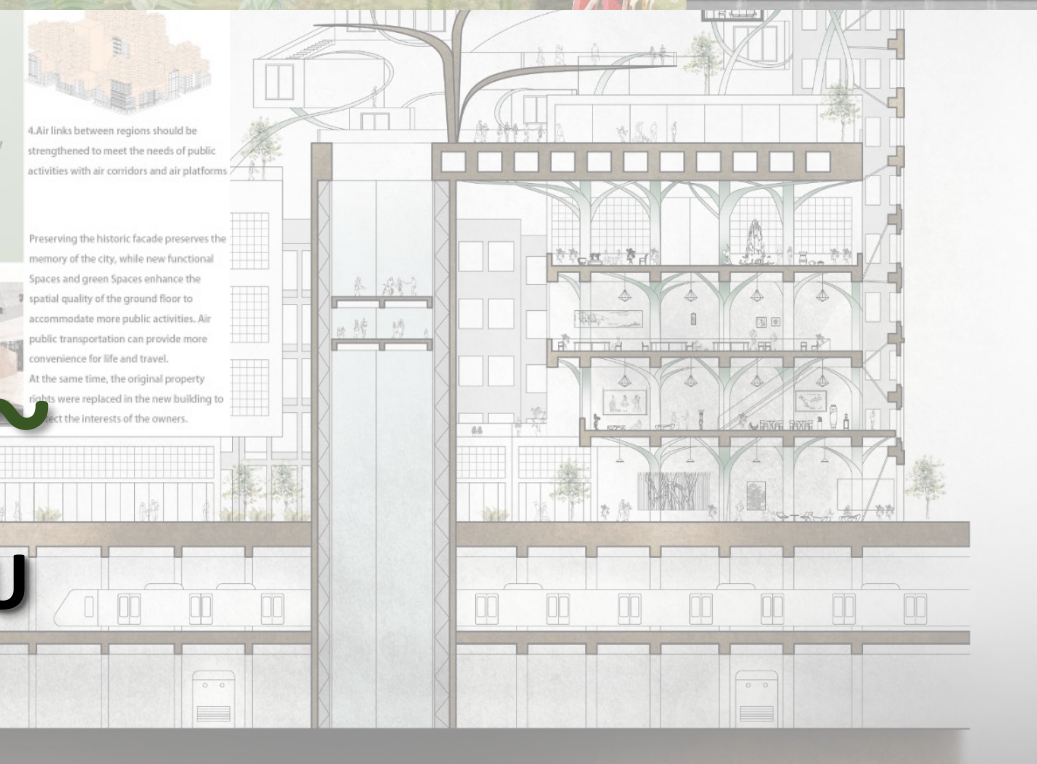
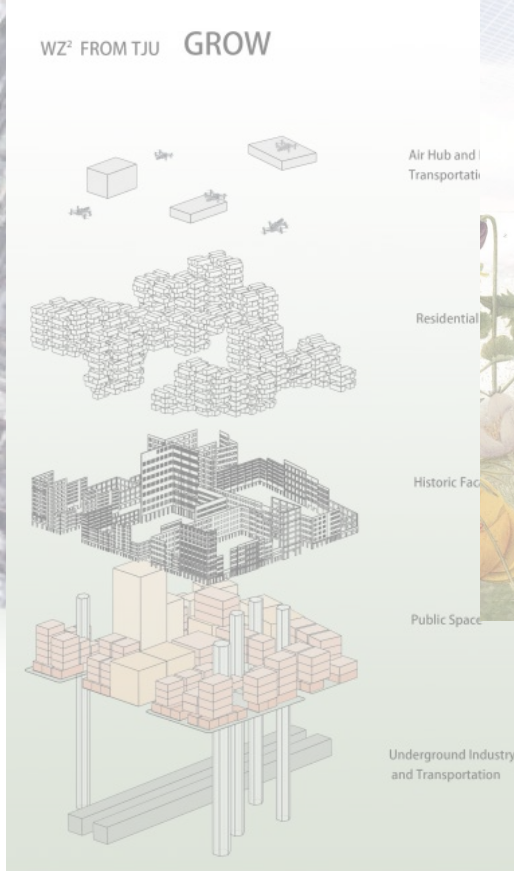
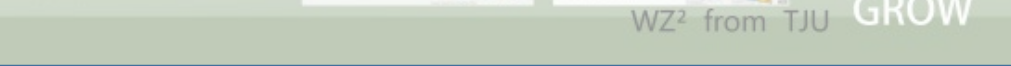
**Poor diversity of activities - backward function**

**Poor quality of life - land mess**

- Goods transportation
- Solid waste
- Open space is cramped

**Insufficient economic activity - lagging regulation**

- Lack of production space
- Lack of regulatory system



Thanks~

WZ² FROM TJU