

Davide  
Crupi

Eloisa  
Gizzi

Valentina  
Rotella

Sarah Rosa  
Torregrossa

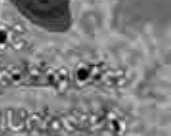
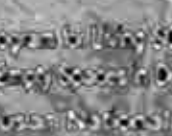
# DAELVASA TEAM

Valledolmo 2030: Living the transition

CAMPUS\_Asia::SUAЕ\_Asia  
2023 Summer School Workshop  
Pusan National University, Korea

SCIENTIFIC COMMITTEE  
University of Palermo  
Renzo Lecardane  
Zeila Tesoriere

TUTOR  
Bianca Andaloro



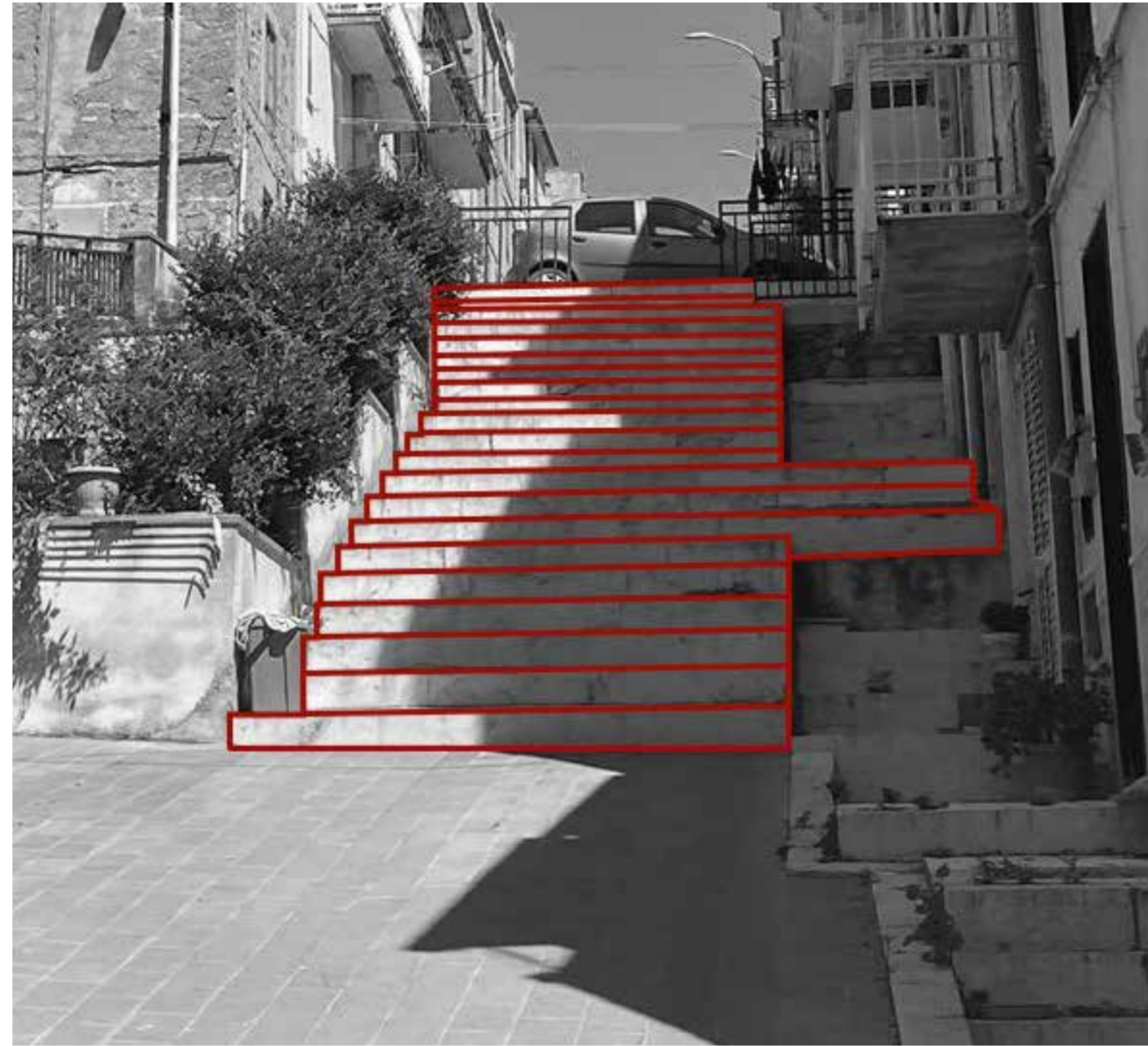
2023 Summer School Workshop  
Pusan National University, Korea



# COMPLEXITY OF THE EXISTING - AREA E



SLOPE



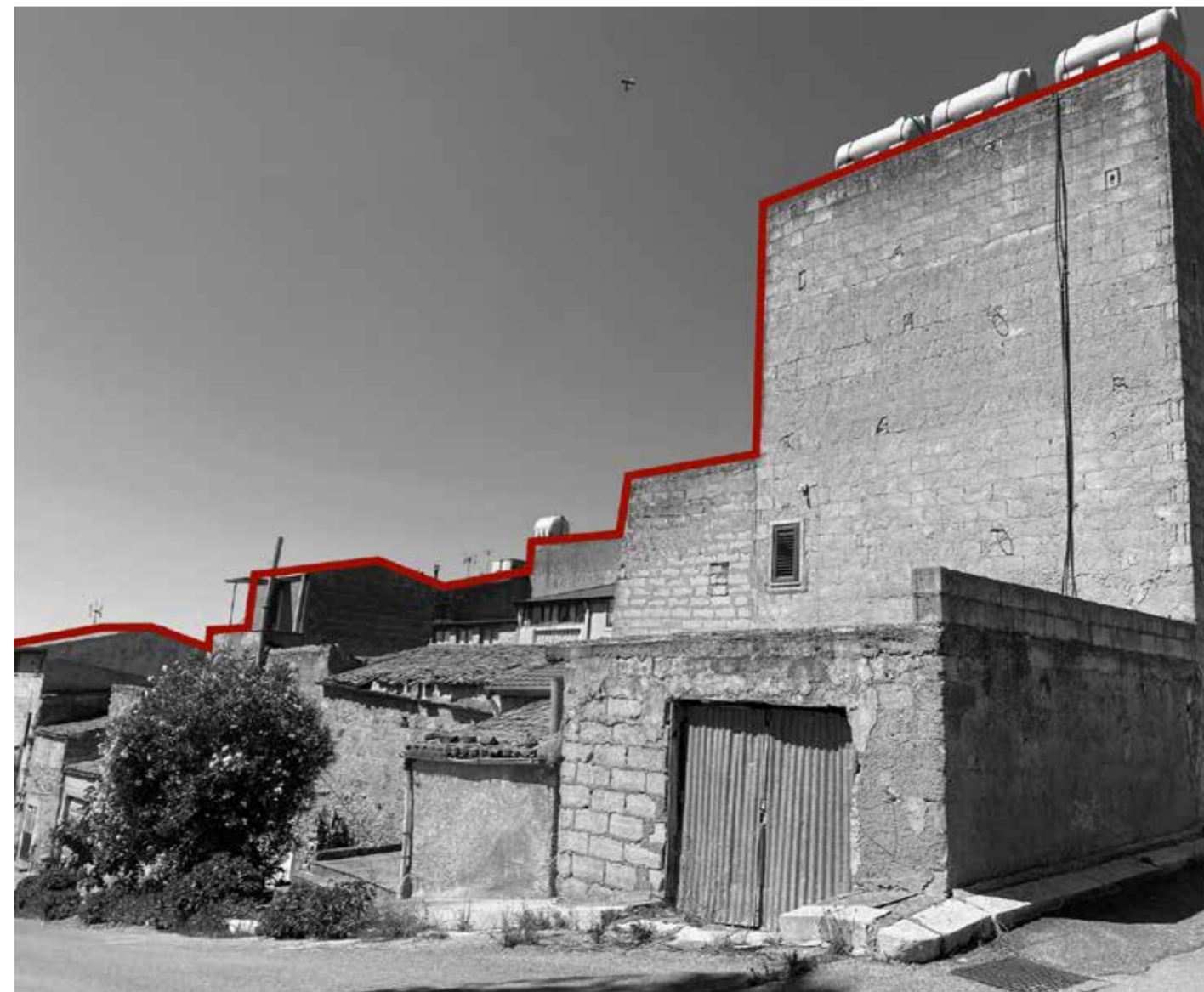
STAIRS



SPACE IN - BETWEEN



GREENERY



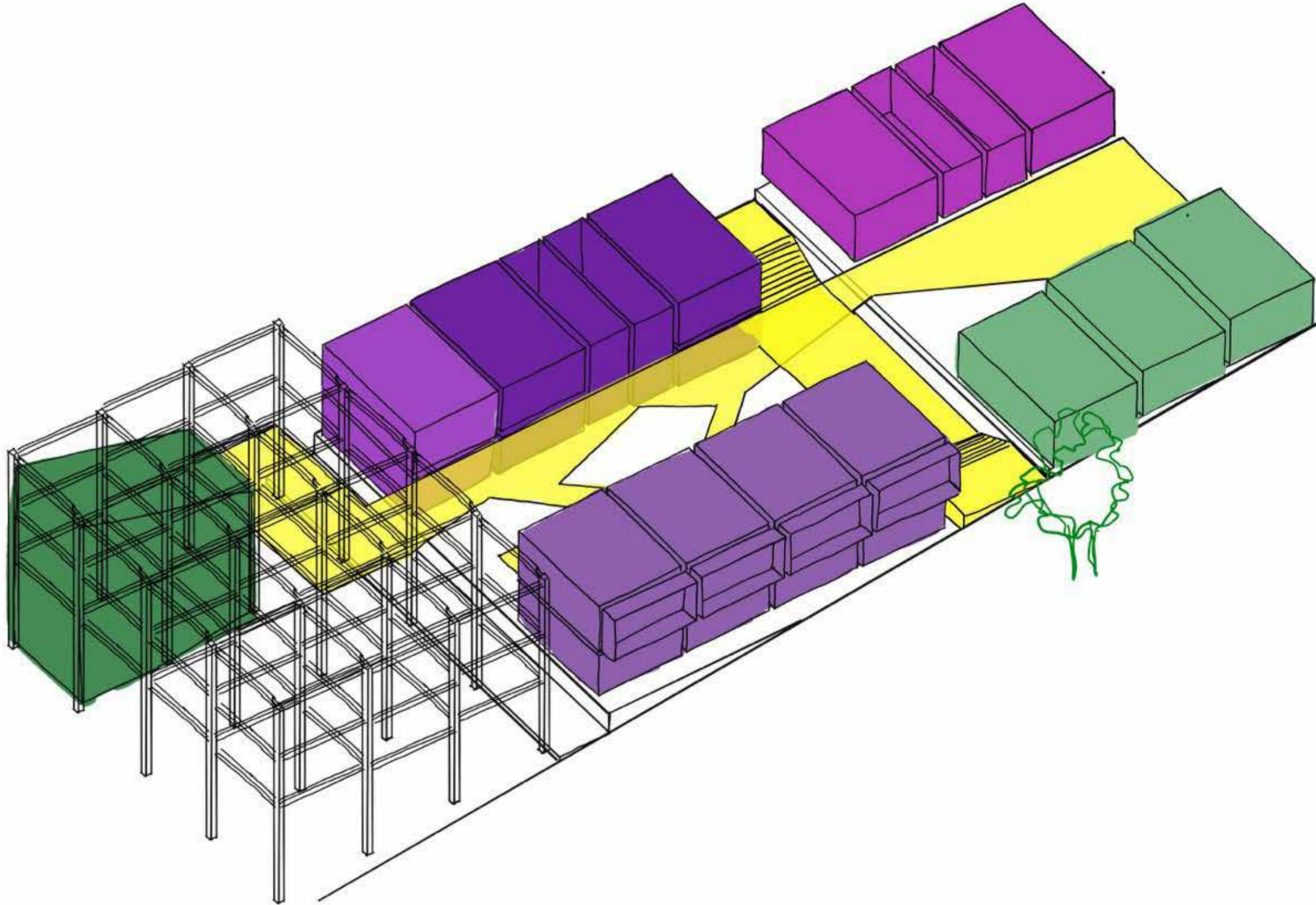
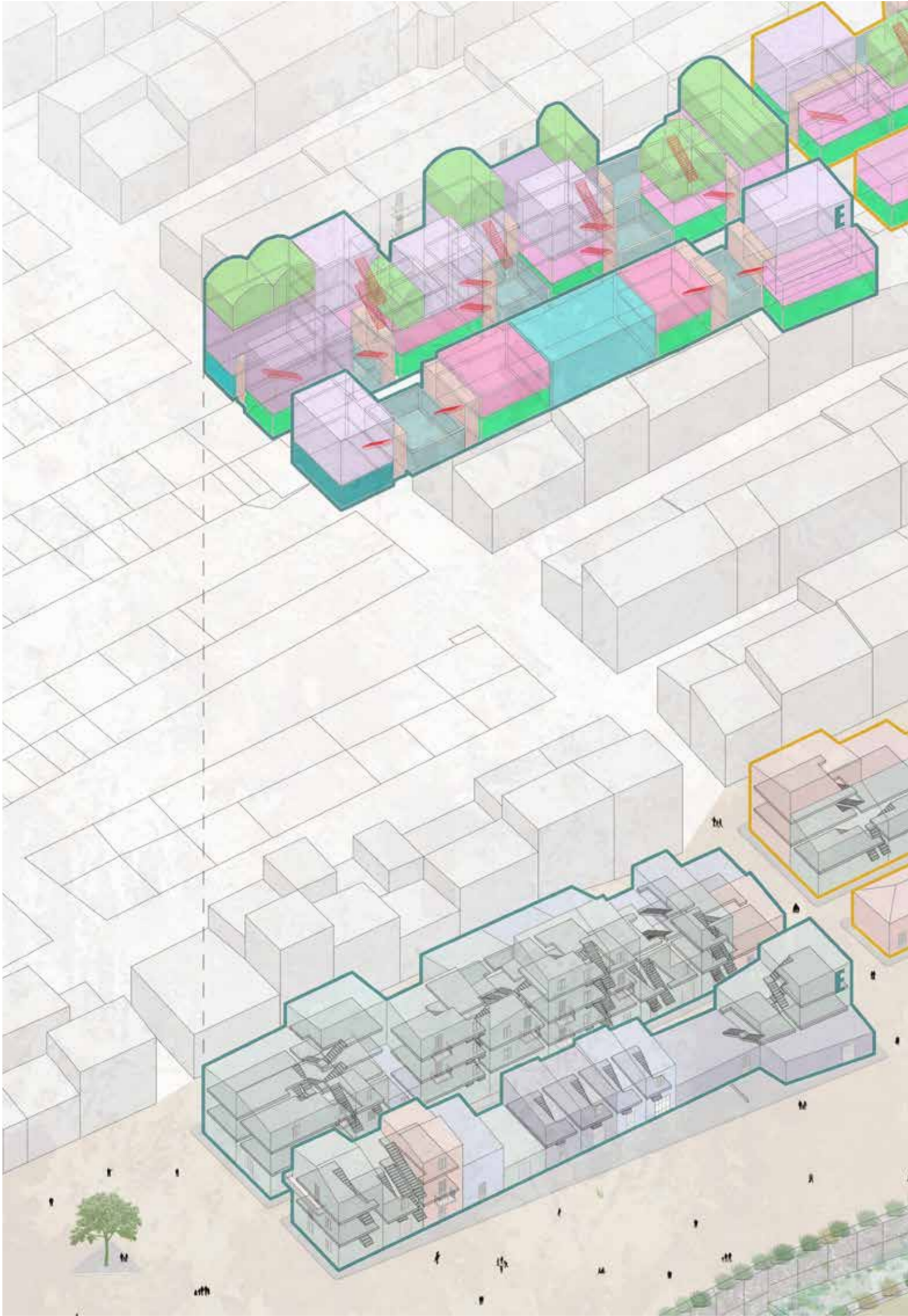
SKYLINE



COURTYARD



# CRITIQUE: PROGRAM



 **SIMPLEX**  
(PERMANENT USE)

no. of units: **3**  
no. of inhabitants: **4**

 **SIMPLEX**  
(TEMPORARY USE)

no. of units: **5**  
no. of inhabitants: **6**

 **DUPLEX**  
(PERMANENT USE)

no. of units: **3**  
no. of inhabitants: **10**

 **DUPLEX**  
(TEMPORARY USE)

no. of units: **6**  
no. of inhabitants: **14**

 **SIMPLEX**  
(PERMANENT USE)

no. of units: **2**  
no. of inhabitants: **8**

 **DUPLEX**  
(PERMANENT USE)

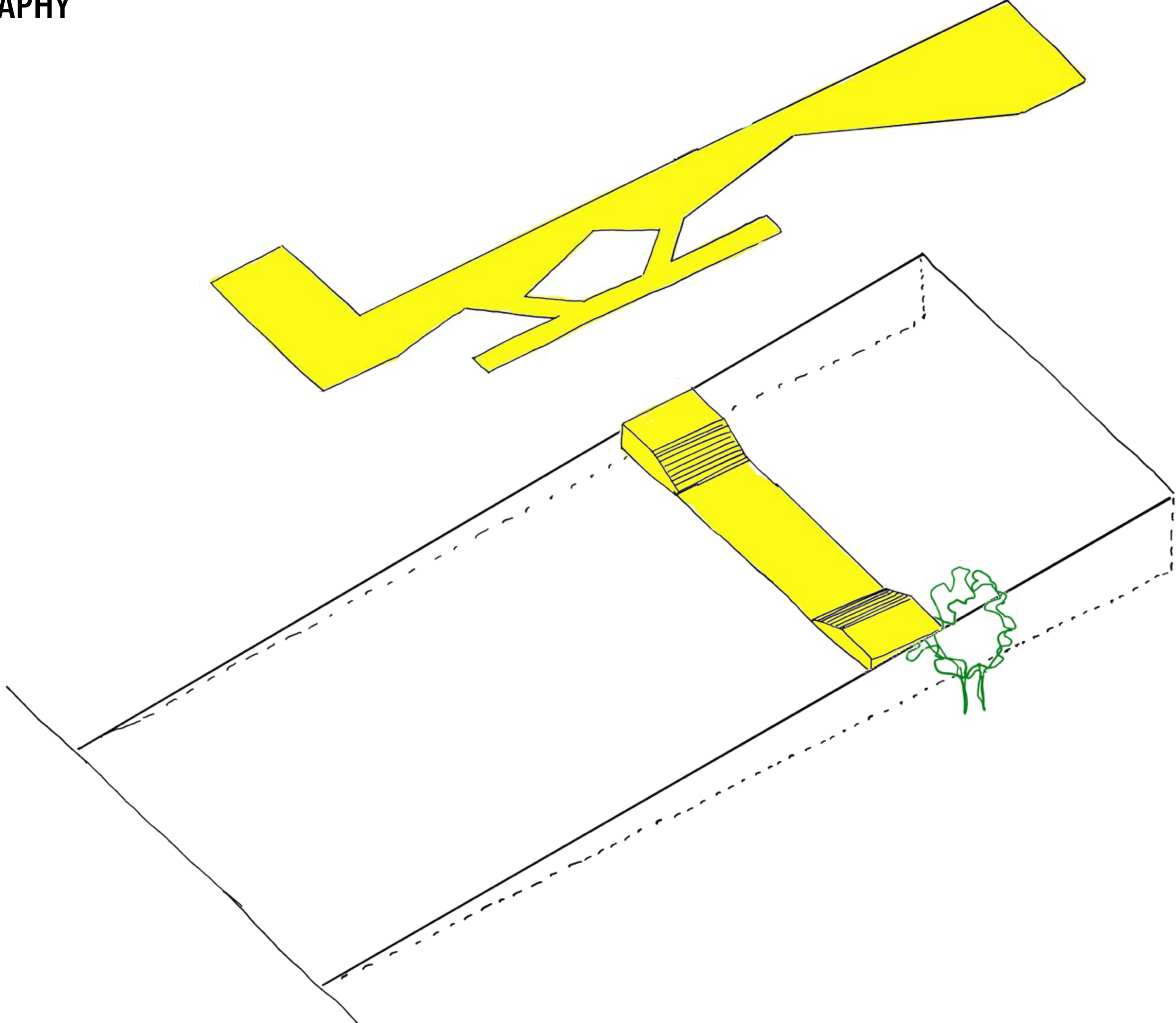
no. of units: **3**  
no. of inhabitants: **12**

 **DUPLEX**  
(TEMPORARY USE)

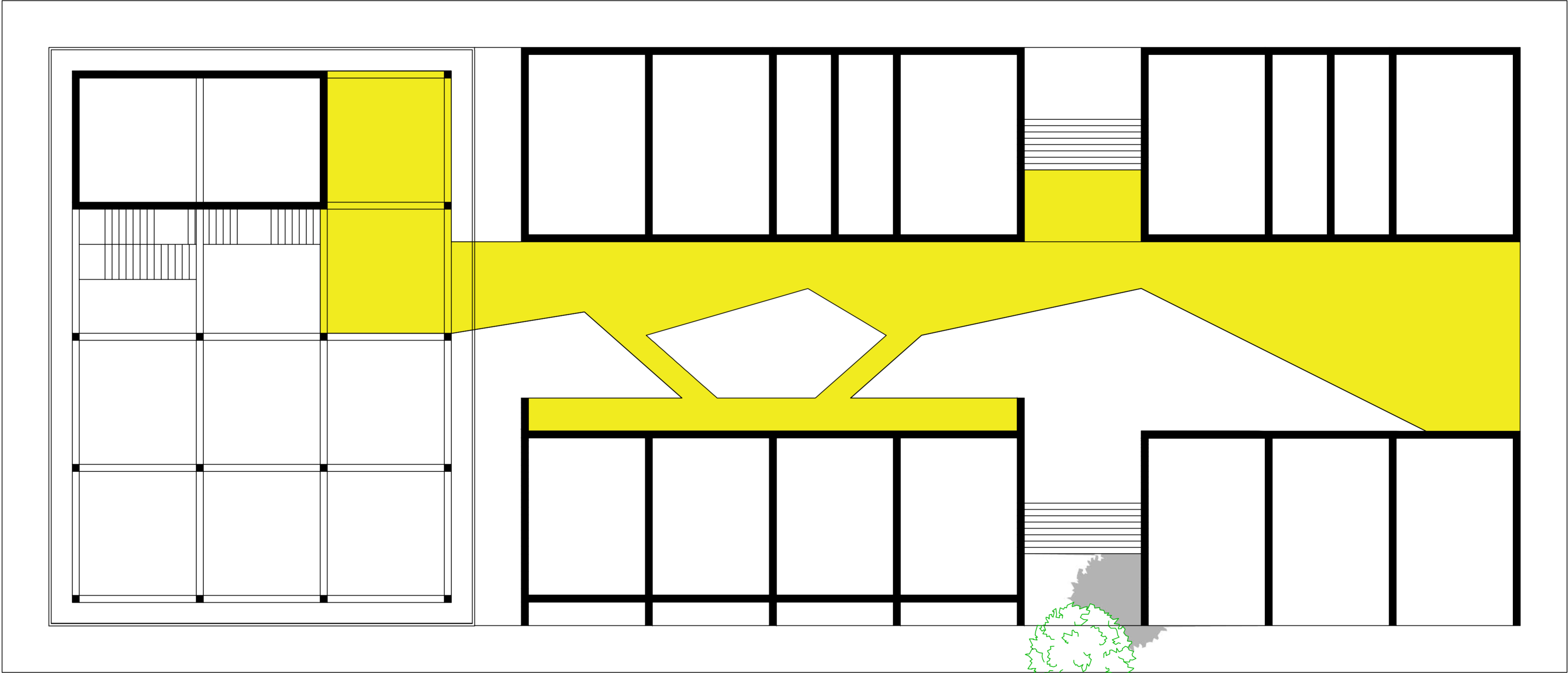
no. of units: **4**  
no. of inhabitants: **16**



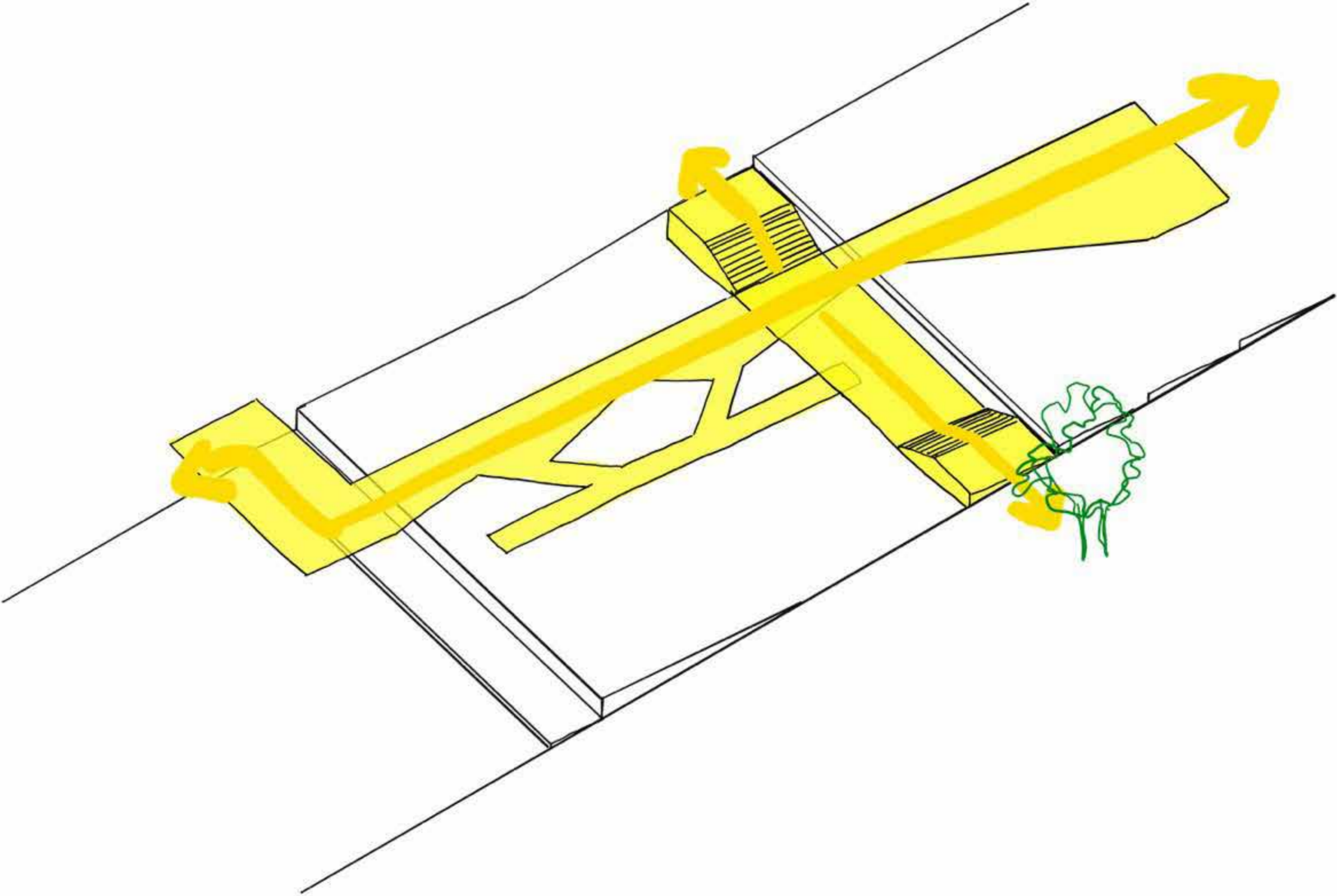
NEW OROGRAPHY



SHADE

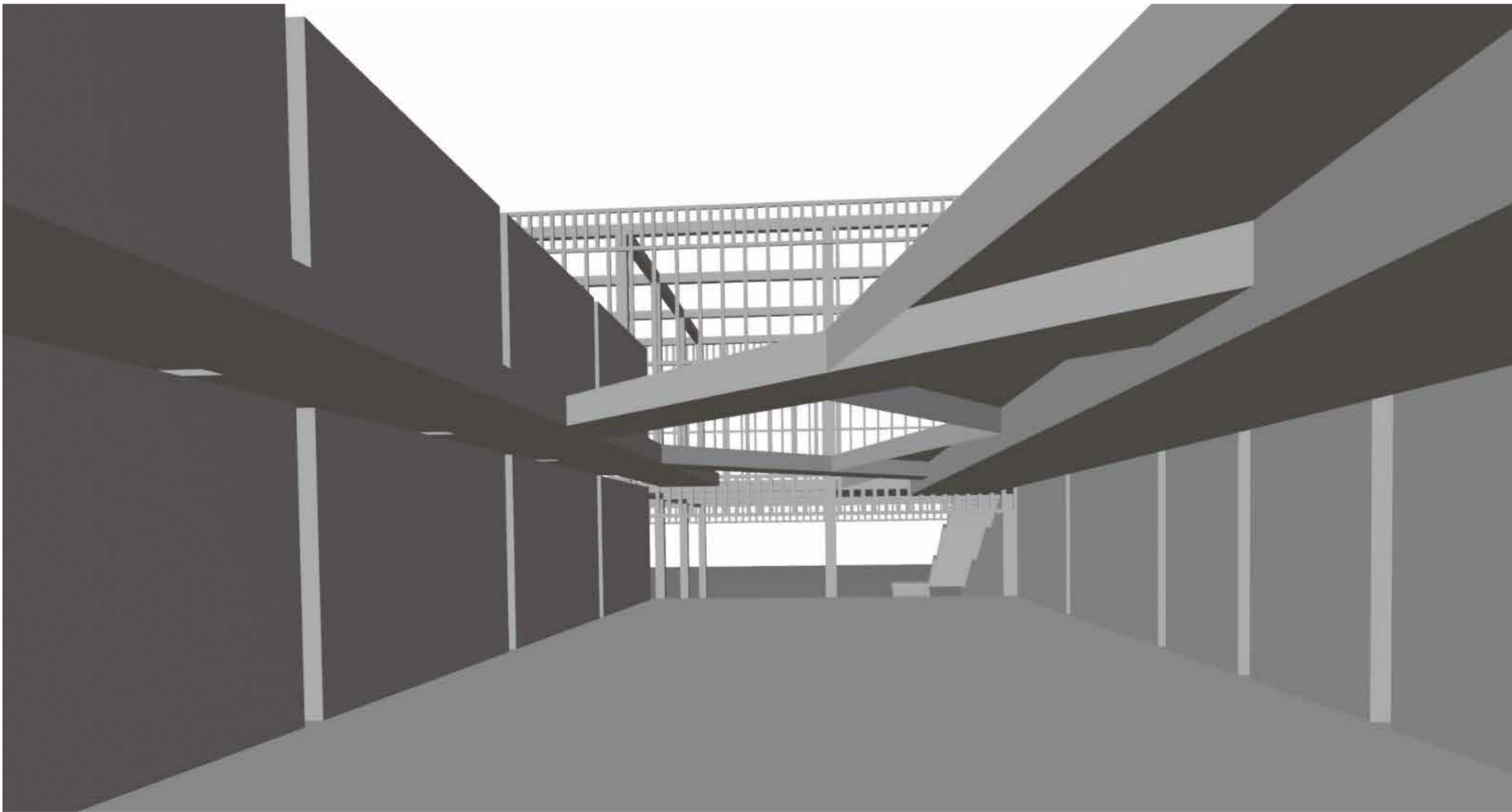
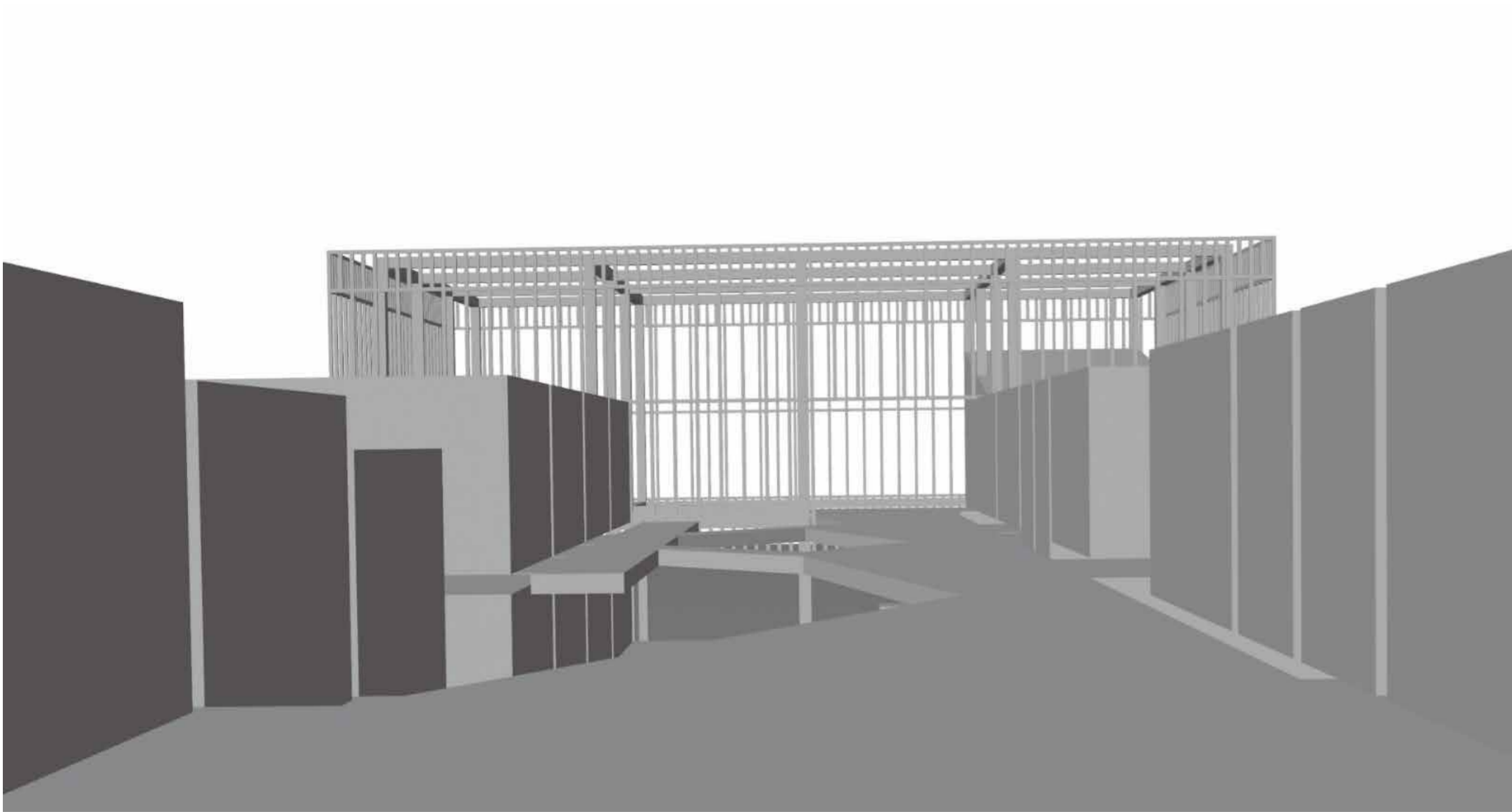
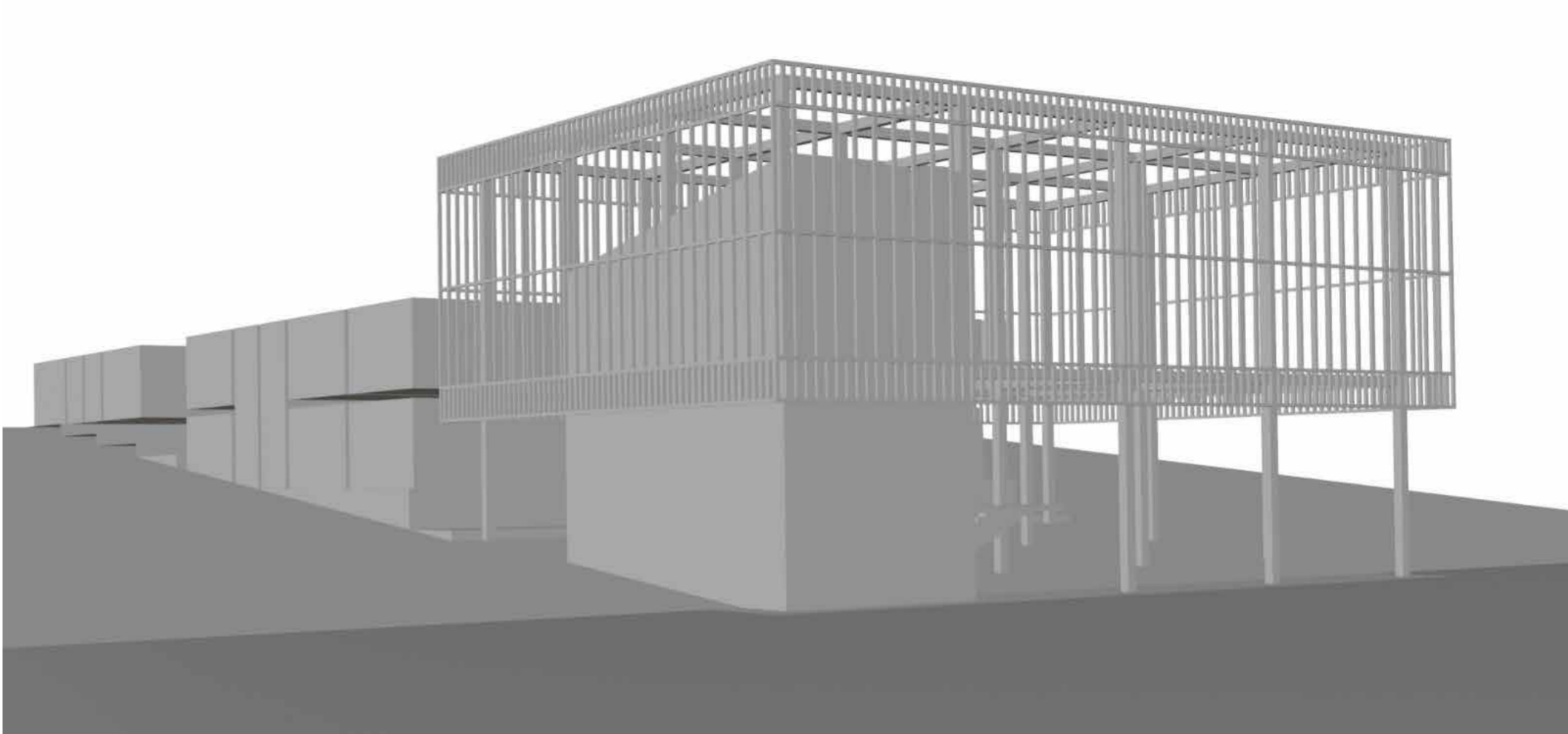
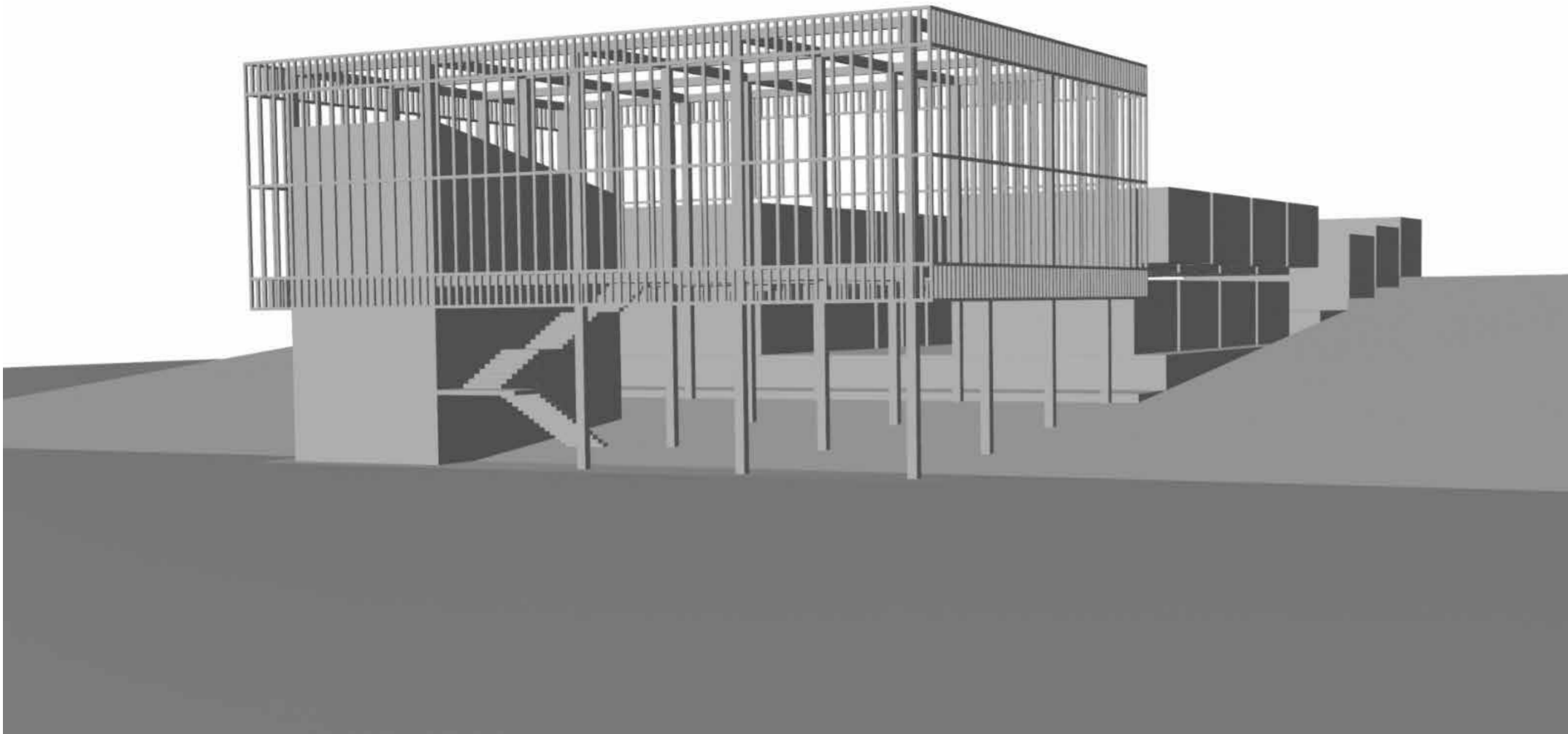


CONNECTION





# RELATIONSHIP BETWEEN SPACES



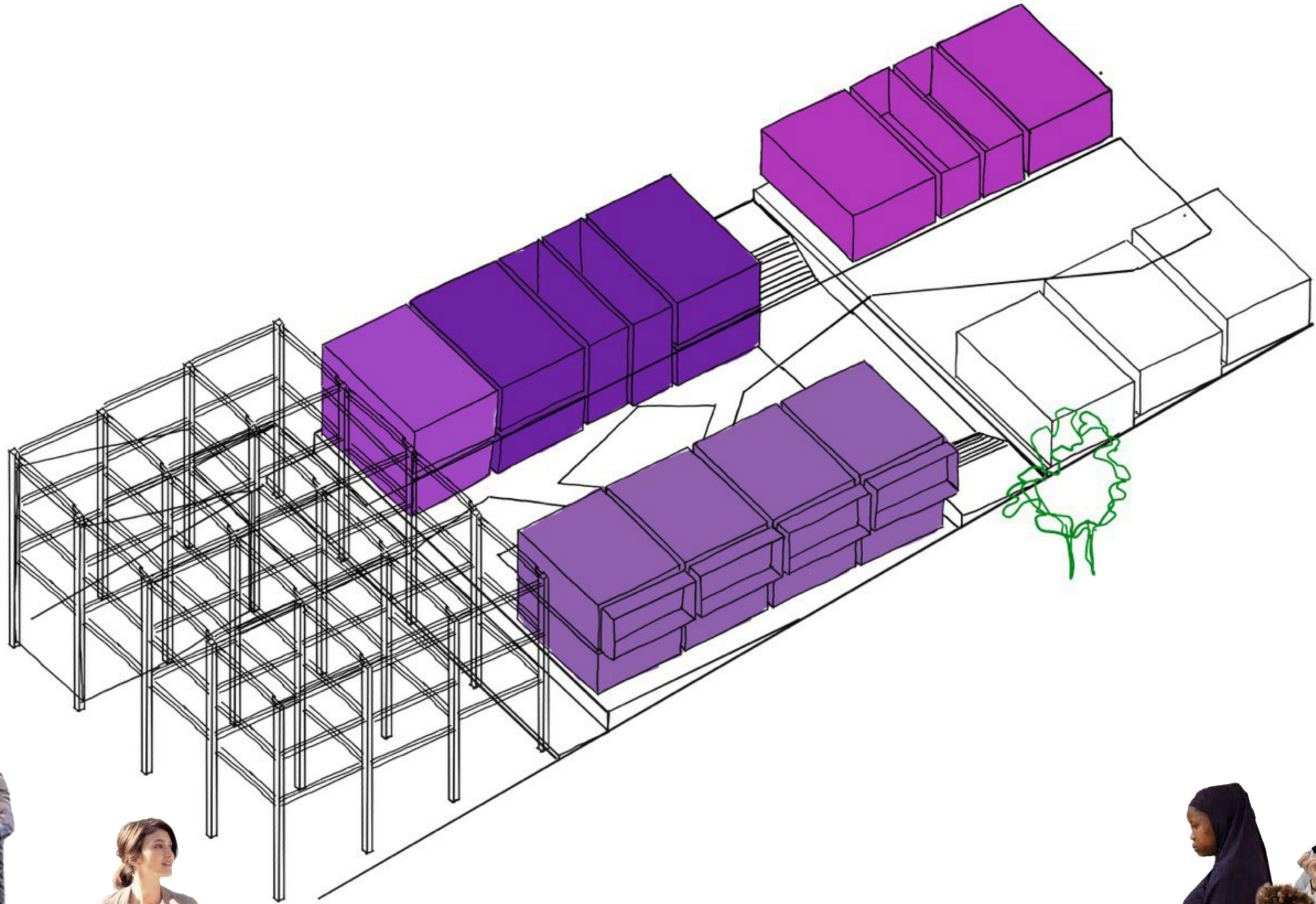


# HOUSING USERS

TEMPORARY USE

**40%**

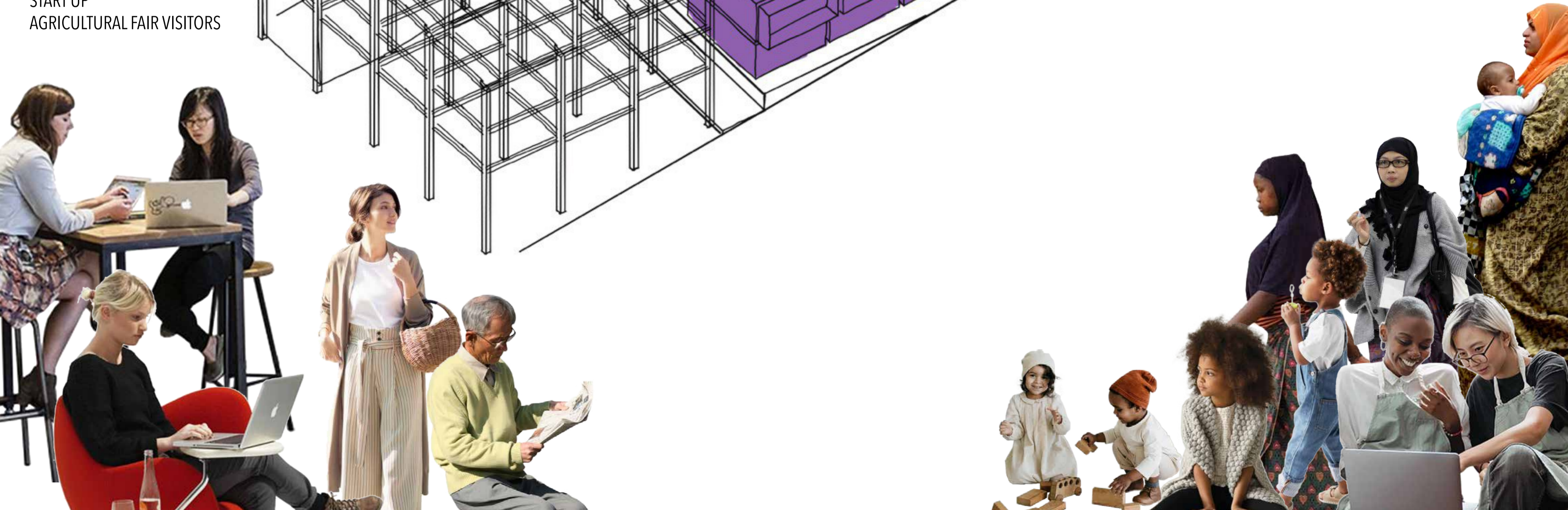
YOUNG PEOPLE RETOURNING  
ELDERLY PEOPLE  
START UP  
AGRICULTURAL FAIR VISITORS



PERMANENT USE

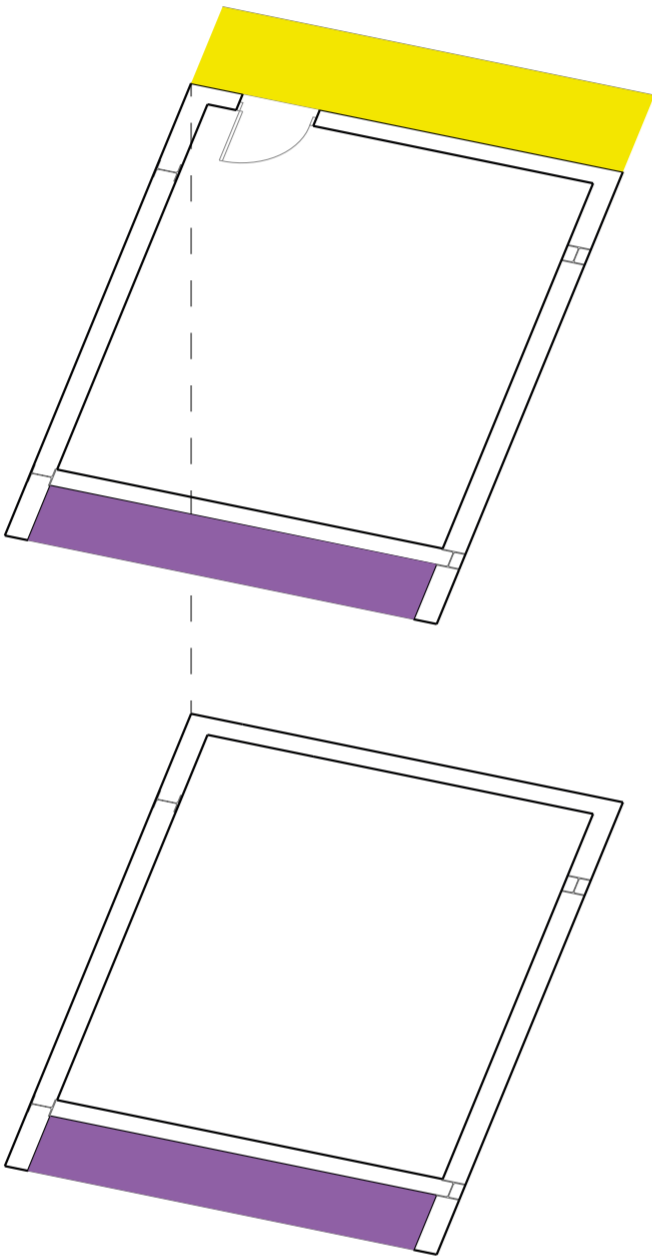
**60%**

MIGRANT FAMILIES



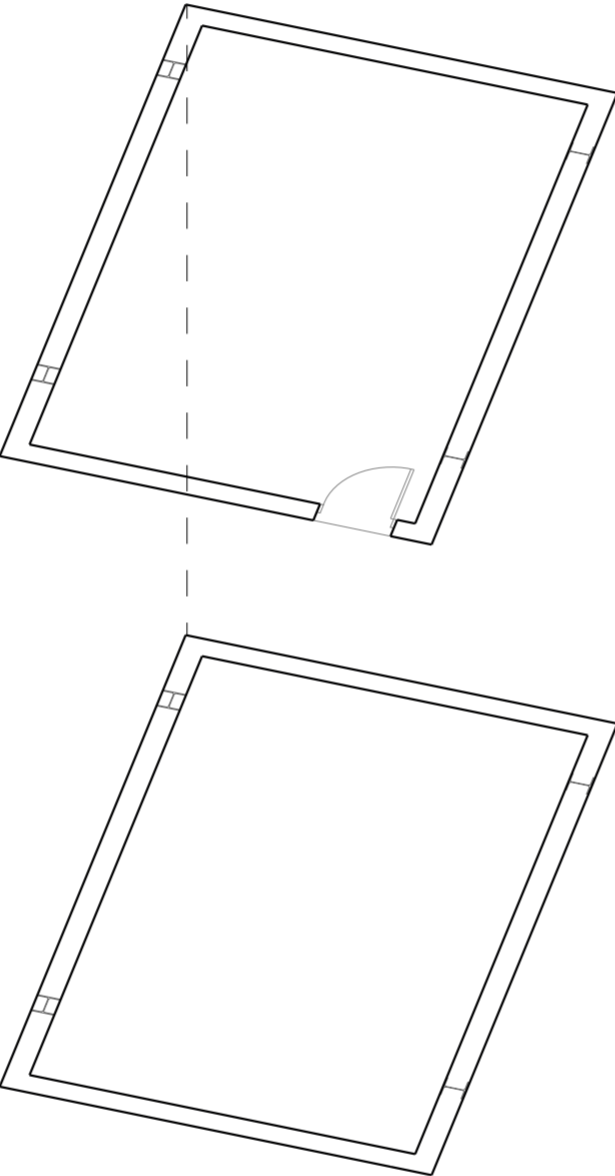


# HOUSING TIPOLOGY



## DUPLEX - TEMPORARY USE

total sq.m: **268 sq.m**  
sq.m per unit: **67 sq.m**  
sq.m lodge: **5 sq.m**  
no. of units: **4**  
no. of inhabitants: **16**



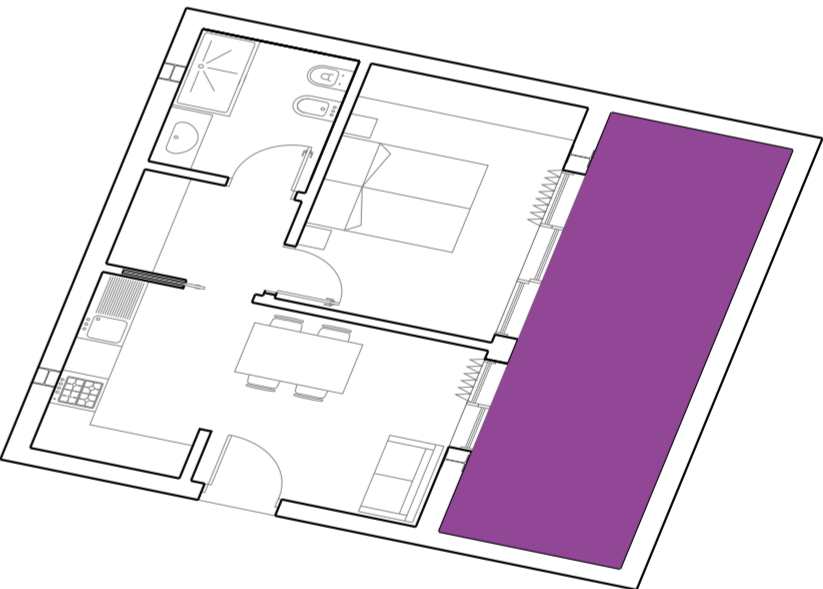
## DUPLEX 2.1

total sq.m: **70 sq.m**  
sq.m per unit: **70 sq.m**  
no. of units: **1**  
no. of inhabitants: **4**



## DUPLEX WITH PATIO

total sq.m: **140 sq.m**  
sq.m per unit: **70 sq.m**  
sq.m patio: **18 sq.m**  
no. of units: **2**  
no. of inhabitants: **8**



## SIMPLEX

total sq.m:  
sq.m per unit:  
no. of units: **3**  
no. of inhabitants: **4**



**NO POVERTY**

WELCOMING MIGRANTS  
COMMUNITY SERVICES  
SOCIAL HOUSING COMMUNITY



**SUSTAINABLE CITIES  
AND COMMUNITIES**

RIQUALIFICATION  
INNOVATION  
SUSTAINABLE MATERIALS  
SUSTAINABLE ENERGY



# SYNTHESIS

- **APPROACH**

- DEMOLITIONS
- RECONSTRUCTION
- NEW BUILDING

- **THEMES**

- SLOPE
- STAIRS
- SKYLINE
- COURTYARD
- SPACE IN - BETWEEN
- NATURE IN ARCHITECTURE

